



The well-known KEY10 is now active!
A versatile and multipurpose sound system with carefully selected
customized transducers. The best option for tight budgets.

KEY FEATURES

TRANSDUCERS TECHNOLOGY

Two-way full range active speaker system composed by one direct radiating 2-inch voice coil, ferrite magnet 10" loudspeaker and one 1-inch voice coil diameter, kevlar diaphragm ferrite magnet driver loaded to 70°x40° dispersion horn.

AMPLIFICATION

600 W 3rd generation Class D built-in amplifier controlled by a dedicated DSP.

90% efficiency amplifier SMPS (switching mode power supply), allowing maximum power delivery with minimum consumption in an extremely low-weight and reduced size.

Rear connections and control panel with LCD screen to display the different settings, presets, volume and adjustments done by the user. A capacitive keypad guarantees the reliability of the system even under humidity and extreme weather conditions.

Connectors are placed on an inclined plane to effectively protect them against rain or moisture.

DSP & CONTROL

Internal DSP with all necessary signal processing (crossovers, EQ's, delay, limiters, gain control, mute, input overload, ALC) as well as several useful presets to adjust KEY10A to different requirements.

The on-screen output power display and the front limiter LED help to easily monitor the system

ALC (Adaptative Loudness Compensation) to improve the listening experience when the cabinet is used at low musical levels.

ECO Mode available.

DESIGN & ACCESSORIES

Ergonomic handle for an easy handling.

1,5mm speaker grille with acoustically transparent foam.

Multilayer plywood cabinet with black matt textured paint.

M8 rigging points for easy flying.

35mm diameter pole mount socket mounted on the bottom side, for a standard tripod.



VERSATILE SYSTEM
MAIN PA &
STAGE MONITOR



**MULTIPLE
PRESETS
AVAILABLE**



**ACCESSORIES
FOR EASY
INSTALLATIONS**



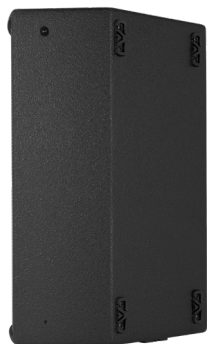
TIGHT BUDGET

TECHNICAL FEATURES

Amplifier (program power)	450 W (LF) + 150 W (HF) – Class D Bi-amplified
Input sensitivity	8 dBu – 1.94 V
Input Impedance	20 kΩ Balanced
Maximum input level	20 dBu
Mains	Universal Switch Mode Power Supply 85-265 V / 45-65 Hz
Average current draw	0.7 A (Heavy duty musical program)
SPL (1 m)	122 dB continuous, 125 dB peak
Built-in DSP	48 bit (including several factory presets)
AD/DA converters	24 bit – 48 kHz
Standby mode consumption	< 5 W
Adjustable Delay line	118 ms / 40 m
Crossover frequency	2k9 Hz
Frequency response (-10 dB)	53 Hz – 19 kHz
Components	LF-MF HF
	10" woofer (2" voice coil) 1" kevlar diaphragm driver
Directivity (HxV)	70° x 40°
Directivity factor (Q)	20
Directivity index (DI)	13 dB
Weight	14.6 kg
Dimensions (HxWxD)	535 x 365 x 340 mm
Finish	Multilayer plywood with black matt textured paint
Grille	1.5 mm steel with foam
Rigging	M8 points
Connectors	1x XLR input / 1x XLR link / 1x AC PowerCon® input



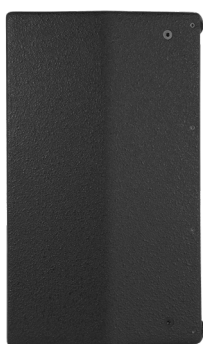
BOTTOM VIEW



RIGHT VIEW



INTERIOR VIEW without grill



LEFT VIEW

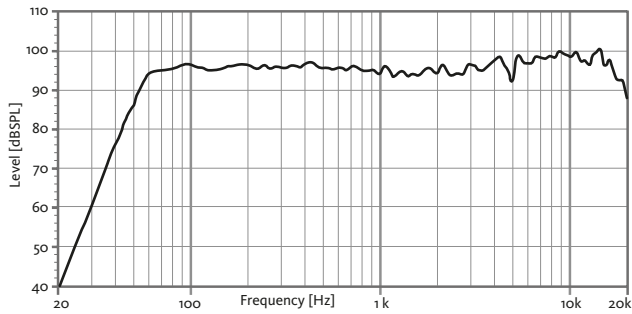


REAR VIEW

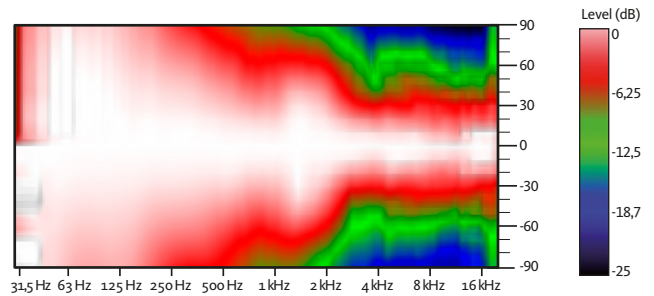


CONNECTION PANEL DETAIL

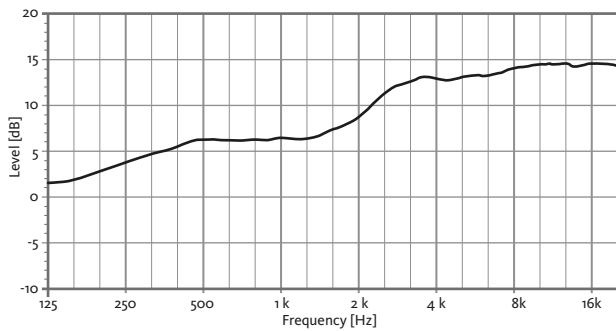
FREQUENCY RESPONSE 1w/1m (FLAT PRESET)



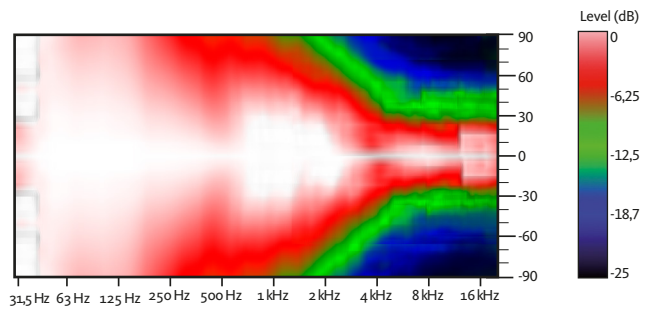
HORIZONTAL COVERAGE



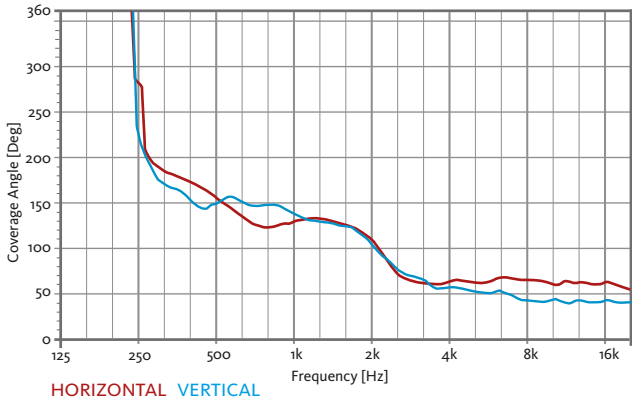
DIRECTIVITY INDEX (DI)



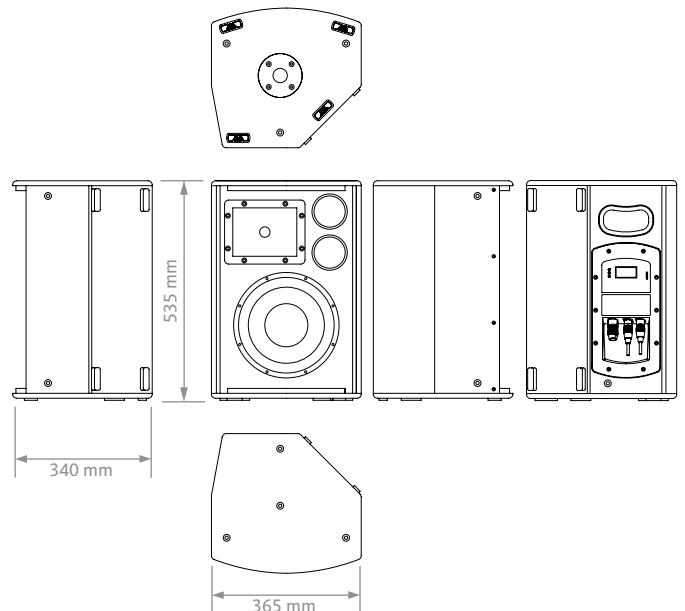
VERTICAL COVERAGE



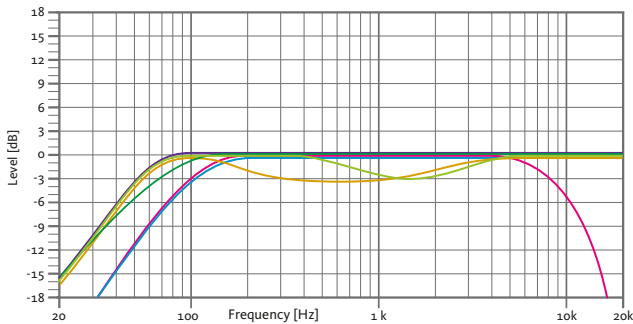
HORIZONTAL & VERTICAL BEAMWIDTH (-6dB point)



CAD DRAWING SCHEME



BUILT-IN PRESETS



FLAT

Flat response

NEARFIELD

-3 dB mid frequencies
(800 Hz - 3 kHz)

NEARFIELD+

-3 dB mid frequencies
(200 Hz - 3 kHz)

SPEECH

HPF 100 Hz / LPF 8 kHz

MONITOR

On floor use

XOVER

HPF 100 Hz

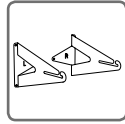
ACCESSORIES

FLIGHT CASE FC-KEY10

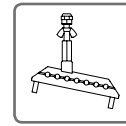
For two units
of KEY10A



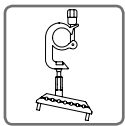
WALL MOUNT BRACKET UB-L



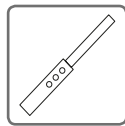
FLYING BAR HR-S



FLYING BAR WITH HOOK HR-S/GT



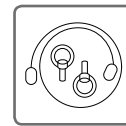
TELESCOPIC DISTANCE ROD SP/CRTL



ø: 35 mm
Length:
55 cm ~ 90 cm
Thread: M20



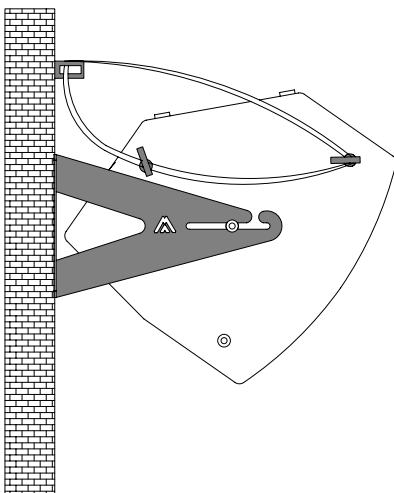
SAFETY SLING SC-15



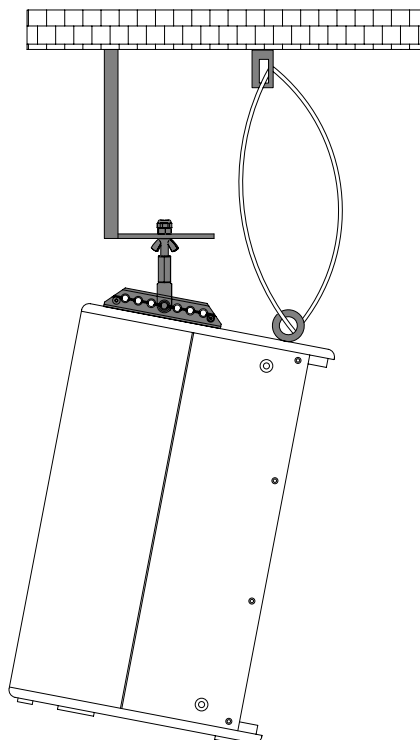
M8 RIGGING EYEBOLT ACR-M8



HORIZONTAL WALL-MOUNT UB-L + SC-15



VERTICAL COLUMN-MOUNT HR-S + SC-15



VERTICAL TRUSS-MOUNT HR-S/GT + SC15

