



ASYMMETRICAL
DISPERSION
HORN



VERSATILE SYSTEM
MAIN PA &
STAGE MONITOR



MULTIPLE PRESETS
AVAILABLE with
external Amate Audio
amplifier & DSP



HIGH RESISTANCE
POLYUREA®
PAINT



ACCESSORIES
FOR EASY
INSTALLATIONS

The perfect compromise for any application. Main PA or stage monitoring. Superb vocal articulation and crystal clear high frequencies in a 400W cabinet give N12PR an optimum balance in its class.

KEY FEATURES

TRANSDUCERS TECHNOLOGY

Two-way full range passive speaker system composed by one direct radiating 2-inch voice coil, 12" loudspeaker and one 1,4-inch voice coil diameter, PETP diaphragm compression driver loaded to an asymmetrical rotational horn (50° to 100° x 55° dispersion).

POWER & CONTROL

400 W continuous power in musical program.

An accurate internal passive crossover achieves an optimum performance while including a protection on high frequency driver.

Connectors are placed on an inclined plane to effectively protect them against rain or moisture.

Double Speakon NL4MPR® (input & link).

Recommended presets available for DSP206, DSP608, LMS206 and TPD.

DESIGN & ACCESSORIES

Ergonomic handles for an easy handling.

Trapezoidal shape for PA or stage monitor application.

2mm speaker grille with black mesh, exclusively designed with an optimum perforation gradient and attractive appearance.

Multilayer birch plywood cabinet with Polyurea® coating, offering maximum reliability and strength for touring as well as for high demanding applications.

M8 rigging points for easy flying.

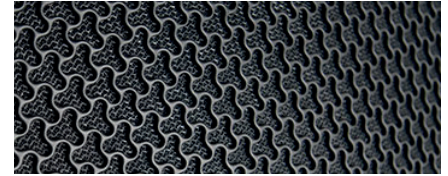
35mm diameter pole mount socket mounted on the bottom side, for a standard tripod.

Protective rubber profiles.

TECHNICAL FEATURES

Power (musical program)	400 W				
Power (r.m.s)	200 W				
Nominal Impedance	8 Ω				
SPL(1W/1m)	97 dB				
Maximum SPL (continuous/1m)	123 dB				
Maximum SPL (peak/1m)	126 dB				
Crossover frequency	2k1 Hz				
Frequency Response (-10dB)	55 Hz – 19 kHz				
Components	<table border="0"> <tr> <td>LF - MF</td> <td>12" woofer (2" voice coil)</td> </tr> <tr> <td>HF</td> <td>1,4" PETP diaphragm compression driver</td> </tr> </table>	LF - MF	12" woofer (2" voice coil)	HF	1,4" PETP diaphragm compression driver
LF - MF	12" woofer (2" voice coil)				
HF	1,4" PETP diaphragm compression driver				
Directivity (H x V)	50° to 100° x 55°				
Directivity factor (Q)	12.6				
Directivity Index (DI)	11 dB				
Weight	18.2 Kg				
Finish	Multilayer birch plywood with high resistant black Polyurea® coating and protective rubber profiles				
Dimensions (H x W x D)	623 x 360 x 390 mm				
Grille	2 mm steel with black acoustic mesh				
Rigging	M8 points				
Connectors	1x Speakon NL4MPR input / 1x Speakon NL4MPR link				

DISCOVER NÍTiD



UNIQUE DESIGN

Distinguishing details include the speaker grille, exclusively designed for an attractive appearance, maximum protection, and with **the best performance coefficient in the market, for improved sound quality**. The Polyurea® finish offers durable protection for the birch-ply cabinet. A wide range of accessories is provided for whatever your application is.



THE PERFECT BALANCE

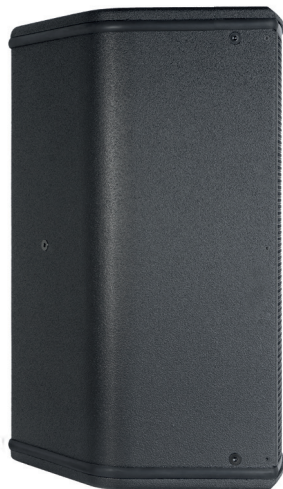
NÍTiD series is the culmination of an intensive program of research, development and optimization, to achieve the greatest possible power and performance from the most compact sized cabinet. Every aspect of its form factor has resulted from examination and consideration of optimum acoustic response, ergonomics, construction and appearance.



TOP VIEW



BOTTOM VIEW



SIDE VIEW

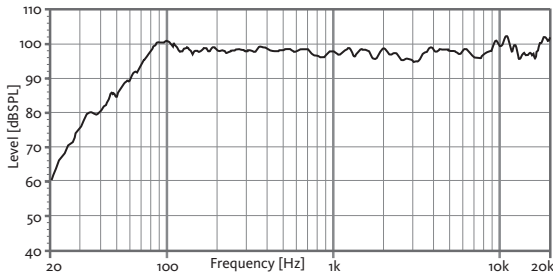


FRONT VIEW

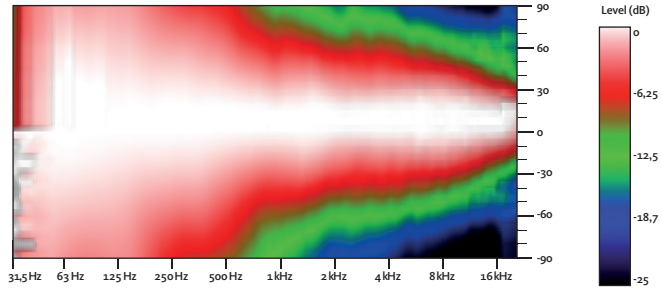


REAR VIEW

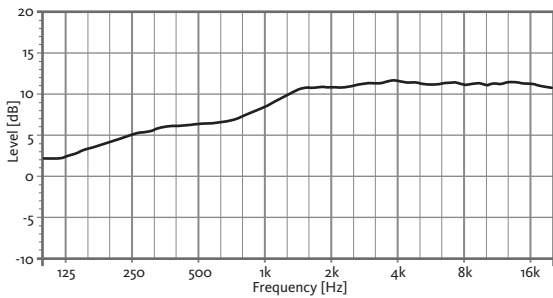
FREQUENCY RESPONSE 1W/1m



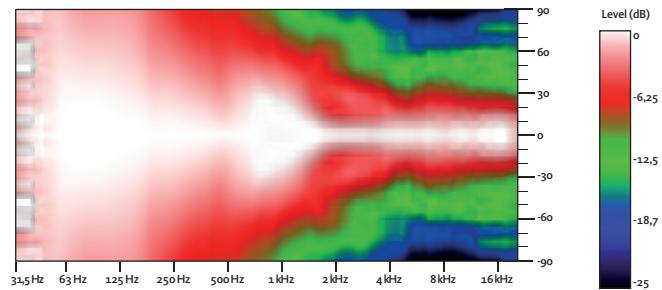
HORIZONTAL COVERAGE



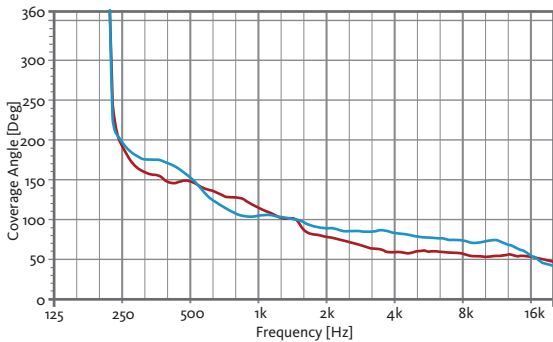
DIRECTIVITY INDEX (DI)



VERTICAL COVERAGE

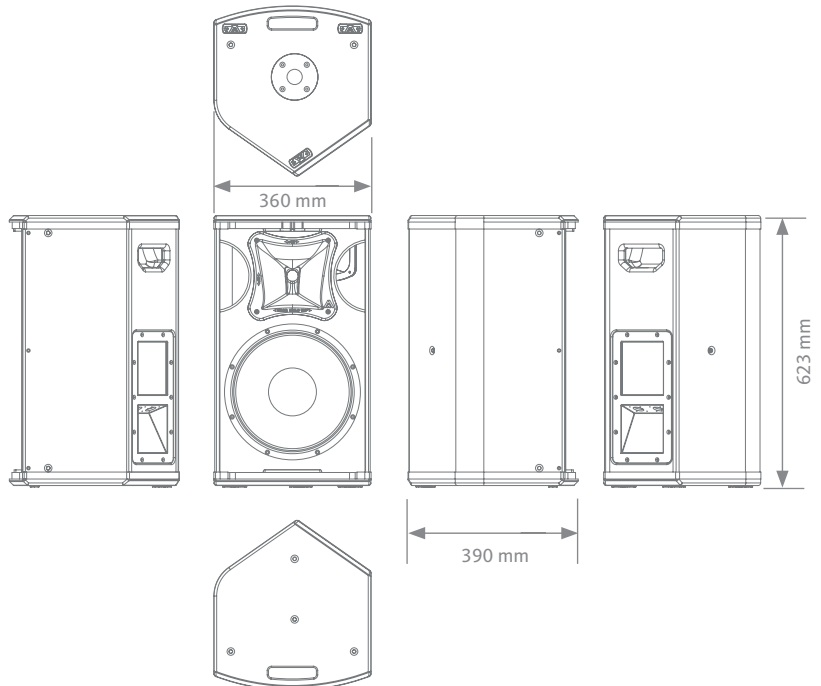


HORIZONTAL & VERTICAL BEAMWIDTH (-6dB point)

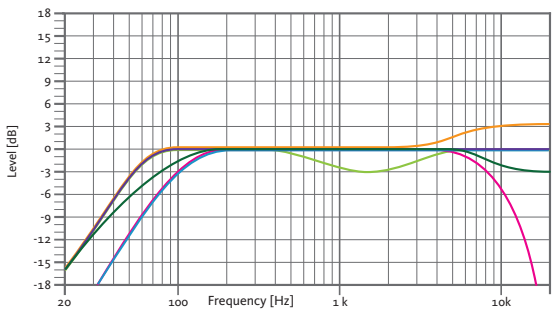


HORIZONTAL VERTICAL

CAD DRAWING SCHEME



RECOMMENDED PRESETS with external Amate Audio DSP



FLAT

Flat response

NEARFIELD

-3 dB mid frequencies (400 Hz - 4 kHz)

LONGTHROW

+3 dB high frequencies

SPEECH

HPF 100 Hz

LPF 8 kHz

MONITOR

Stage monitor use

XOVER

HPF 100 Hz

ACCESSORIES

FLIGHT CASE

FC-N12
for two units of N12PR



WALL MOUNT BRACKET

UB-L



FLYING BAR

HR-S



FLYING BAR WITH HOOK

HR-S/GT



M8 RIGGING EYEBOLT

ACR-M8



SAFETY SLING

SC-15



TELESCOPIC DISTANCE ROD

SP-CRTL

ø: 35 mm
Length: 55 cm ~ 90 cm
Thread: M20



RECOMMENDED CONFIGURATION

FOR N12PR (2 units)

Connect each cabinet output of the amplifier LEFT/RIGHT to each cabinet using two independent wires.

FOR N12PR (4 units)

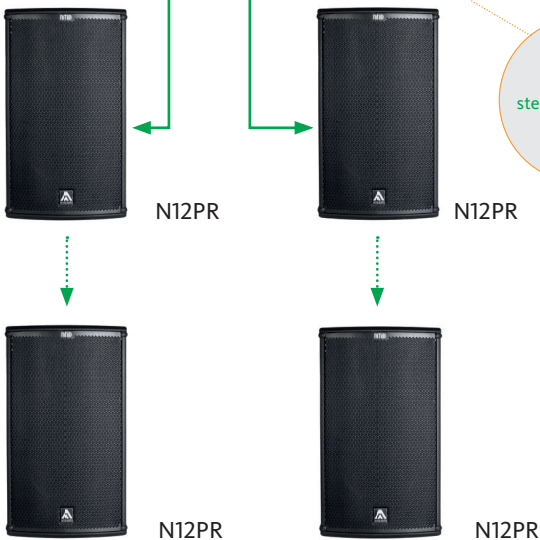
Connect the amplifier's output to the Speakon's input of the first cabinet. Then, make a bridge from the first cabinet to the second one. This configuration allows you to connect up to four cabinets to the same amplifier.



DSP206 / DSP608 / LMS206

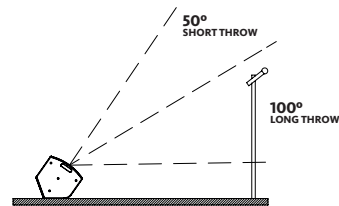
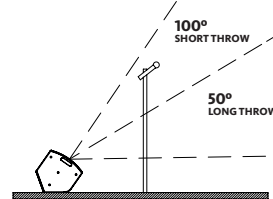
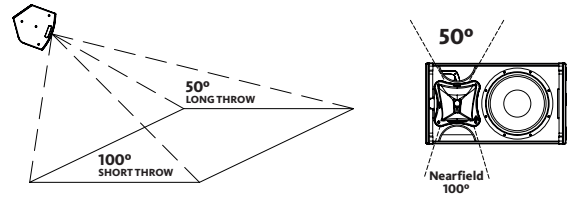
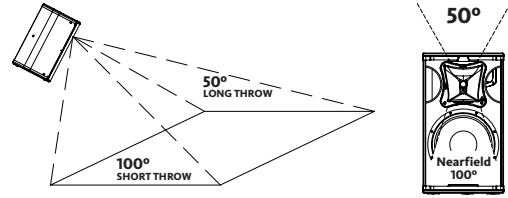


HD2000
Stereo mode



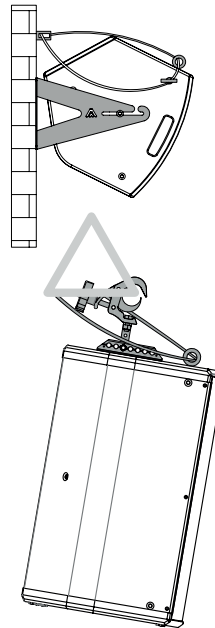
ASYMMETRICAL DISPERSION HORN

It allows to optimize the coverage depending on its position.



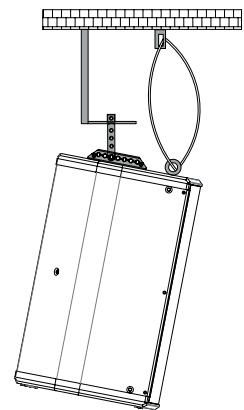
HORIZONTAL WALL-MOUNT

UB-L + SC-15



VERTICAL COLUMN-MOUNT

HR-S + SC-15



VERTICAL TRUSS-MOUNT

HR-S/GT + SC-15