

LIGHT  
NEODYMIUM  
COMPONENTS



CARBON FIBER  
CONE



REAR PANEL  
TOUCHSCREEN GUI  
OPERATION



INTEGRATED POWER &  
CONTROL WITH MULTIPLE  
PRESETS



HIGH RESISTANCE  
POLYUREA®  
FINISH



EASY RIGGING &  
INSTALLATION ACCESSORIES

Dual custom high-performance 6" carbon fiber drivers deliver incredible sound quality and a 121 dB continuous SPL output capability from this advanced ultra-compact, active self-powered loudspeaker system, providing extraordinary power levels and signal coverage from this discretely dimensioned loudspeaker.

## KEY FEATURES

### TRANSDUCER TECHNOLOGY

Two-way full range active loudspeaker system comprising two direct radiating 1.5-inch voice coil, neodymium magnet 6" loudspeakers and one a 1-inch voice coil diameter, titanium diaphragm neodymium magnet tweeter.

### AMPLIFICATION

Onboard 450 W 3rd generation Class bi-amplification.

Universal switch mode power supply (SMPS) with Power Factor Correction (PFC), allowing constant power delivery from 85 to 265 VAC input and high efficiency (>90%), with extremely compact lightweight form factor.

Automatic EcoMode low power consumption mode when no signal input present.

Connectors mounted on an inclined recessed moulded connector plate for improved security and environmental protection.

Double PowerCon® connectors (input & link).

### ADVANCED DSP SYSTEM CONTROL

Onboard 64-bit precision DSP loudspeaker system control manages amplifier gain and cross-over settings, peak and thermal limiters and mutes. Includes adjustable 294 ms / 100 m delay line for extensive alignment delay and 5-band fully configurable parametric EQ.

High-order FIR filtering ensures fully phase coherent PEQ adjustment and absolute phase alignment of common cabinet couplings.

Extensively R&D'd factory presets provide instantaneous system configuration for common applications, including point-source PA, speech and subwoofer coupling.

ALC (Adaptive Loudness Compensation) improves the listening experience when the system is used at low volume levels.

Operation and monitoring of system parameters, presets and user-adjustments is via Amate Audio's unique rear-panel 3.5" TFT colour touchscreen GUI. The front-panel Nítid backlit logo can be switched on or off, or set to indicate system limiting.

### DESIGN & ACCESSORIES

Recessed ergonomic carry handles for easy handling.

Exclusive 1.5mm black mesh speaker grille with optimum perforation gradient and aesthetic appearance.

Multilayer birch plywood cabinet with Polyurea® coating for maximum robustness and strength, for touring, events production, venue installation and other highly demanding applications.

M8 rigging points for easy flying.

35mm diameter pole mount socket mounted on the bottom side, for a standard tripod.

## TECHNICAL FEATURES

Amplifier (program)	400 W (LF) + 50 W (HF) Class D Bi-amplified
Input sensitivity	8 dBu – 1.94 V
Input Impedance	50 kΩ Balanced
Mains	Universal Switch Mode Power Supply 85-265 V / 45-65 Hz
Average current draw	1.2 A (Heavy duty musical program)
SPL(1m)	121 dB musical program, 124 dB peak
Built-in DSP	64-bit processing unit. Includes factory presets
AD/DA converters	24 bit – 48 kHz
Standby mode consumption	3.7 W @230VAC
Adjustable delay line	294 ms / 100 m
Crossover frequency	3k Hz
Frequency response (-10dB)	58 Hz – 20 kHz
Components	<div>LF - MF</div> <div>HF</div> <div>2x6" neodymium woofers with carbon fiber cone (1.5" voice coil)</div> <div>1" titanium diaphragm neodymium tweeter</div>
Directivity (-6dB)	90° (H) x 70° (V)
Directivity factor (Q)	12.6
Directivity Index (DI)	11 dB
Weight	10.4 Kg
Dimensions (HxWxD)	572 x 230 x 250 mm
Finish	Multilayer baltic birch plywood with high resistant black Polyurea® coating
Grille	1.5mm powder coated steel with black acoustic mesh
Rigging	M8 points
Connectors	1x XLR input / 1x XLR link / 1x AC PowerCon® input / 1x AC PowerCon® link
Available colors	Black and white

## TOUCHSCREEN CONTROL



Amate Audio's latest generation DSP System management is integrated with 3rd generation Class D amplification. Colour touchscreen operation and monitoring of DSP System includes access to powerful presets - engineered by Amate Audio R&D team – that instantly configure your Nítid loudspeaker for the majority of common application environments within seconds, prior to rigging or installation.



TOP VIEW



BOTTOM VIEW



SIDE VIEW

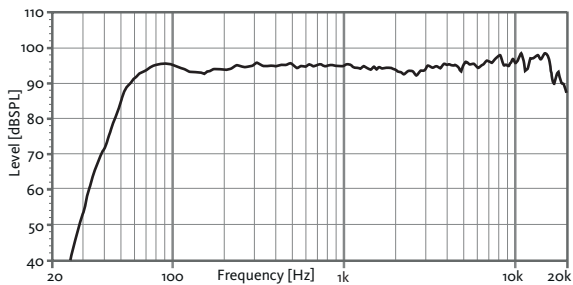


FRONT VIEW

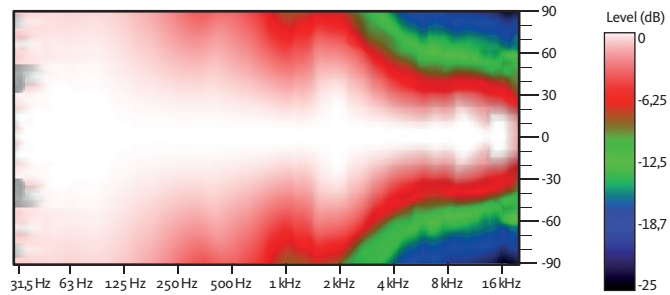


REAR VIEW

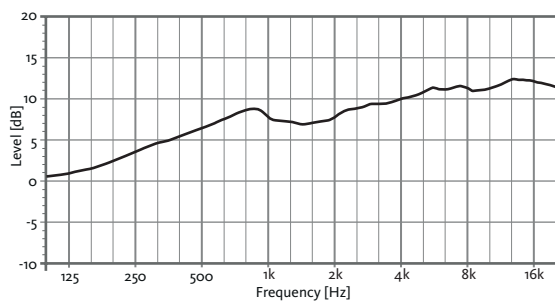
## FREQUENCY RESPONSE 1W/1m (FLAT PRESET)



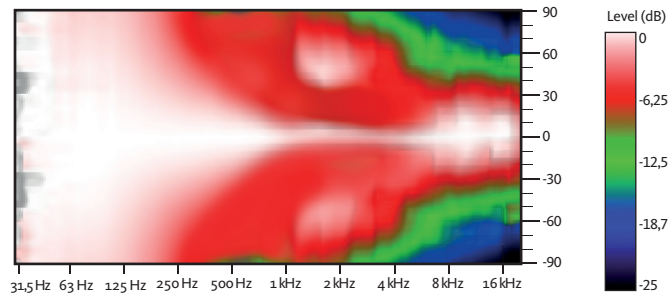
## HORIZONTAL COVERAGE



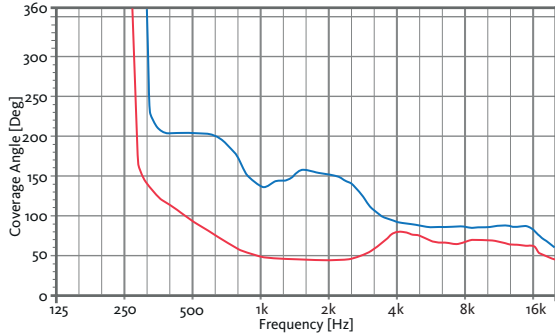
## DIRECTIVITY INDEX (DI)



## VERTICAL COVERAGE

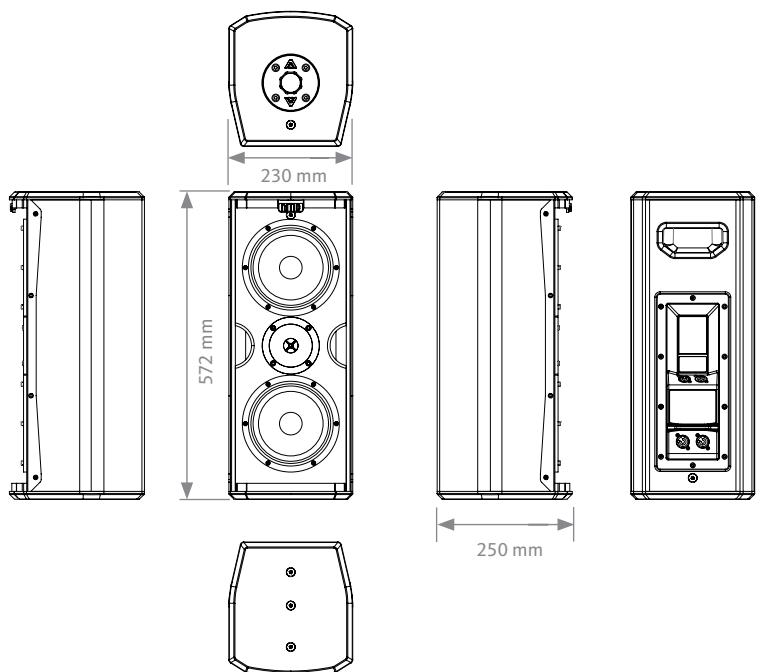


## HORIZONTAL &amp; VERTICAL BEAMWIDTH (-6dB point)

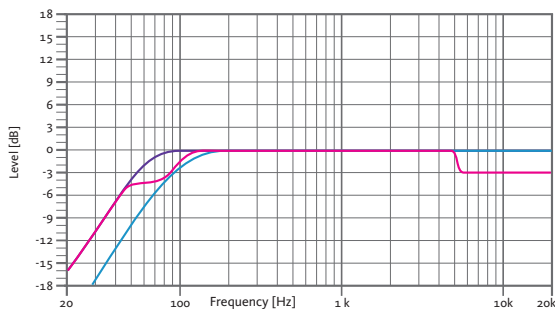


HORIZONTAL VERTICAL

## CAD DRAWING SCHEME



## BUILT-IN PRESETS



FLAT

Flat response

SPEECH

Vocal use

HPF90

HPF 90 Hz



## S26

2x 6" TWO-WAY ACTIVE  
FULL-RANGE SPEAKER SYSTEM

NÍTiD



## ACCESSORIES

**TRANSPORT COVER**  
NC-S26



**WALL-MOUNT  
BRACKET**  
SP-WHR



**FLYING BAR**  
HR-LU



**FLYING BAR  
WITH HOOK**  
HR-LU/GT



**WALL MOUNT  
BRACKET**  
SP-S26



**SAFETY SLING**  
SC-15



**M8 RIGGING  
EYEBOLT**  
ACR-M8



**WALL MOUNT  
BRACKET**  
UB-L



**WALL MOUNT  
BRACKET**  
SP-6N



**TELESCOPIC  
DISTANCE ROD**  
SP-CRTL  
ø: 35 mm  
Length:  
55 cm ~ 90 cm  
Thread: M20



## DISCOVER NÍTiD



## UNIQUE DESIGN

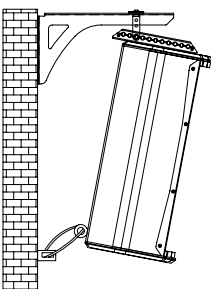
New S-series models build on the success, innovation and best-in-class performance of the original Nítid designs with improved features including a recessed moulded connector plate, more highly stylised form factor and improved robustness of the world's most acoustically transparent pro-audio speaker grille.



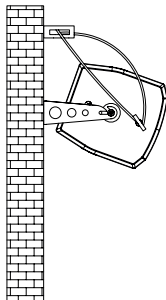
## THE PERFECT BALANCE

An ongoing programme of research and development ensures that Nítid series loudspeakers continue to achieve the highest levels of output and performance from the most compact sized designs, in an unrivalled synthesis of engineering and aesthetic form.

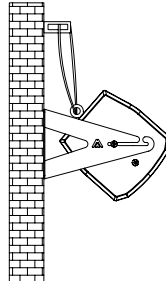
**VERTICAL WALL-MOUNT**  
SP-WHR + SC-15



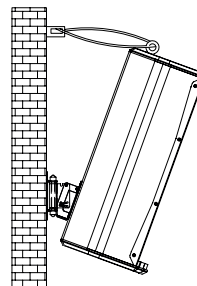
**HORIZONTAL WALL-MOUNT**  
SP-S26 + SC-15



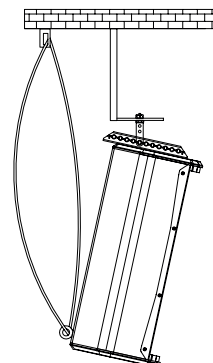
**HORIZONTAL WALL-MOUNT**  
UB-L + SC-15



**VERTICAL WALL-MOUNT**  
SP-6N + SC-15



**VERTICAL COLUMN-MOUNT**  
HR-LU + SC-15



**VERTICAL TRUSS-MOUNT**  
HR-LU/GT + SC-15

