

LIGHT
NEODYMIUM
COMPONENTS



CARBON FIBER
CONE



MULTIPLE PRESETS AVAILABLE
with external Amate Audio
amplifiers & DSP's



HIGH RESISTANCE
POLYUREA®
PAINT



ACCESSORIES FOR
EASY INSTALLATIONS

The most compact system in the NÍTiD series. The 6" single woofer and 1" dome tweeter configuration is housed in an enclosure of minimal dimensions, enabling its application in all kinds of installations that demand the highest sound quality from a loudspeaker system with the most discreet possible form factor.

KEY FEATURES

TRANSDUCERS TECHNOLOGY

Two-way full range passive speaker system composed by one direct radiating 1,5-inch voice coil, neodymium magnet 6" loudspeaker and one 1-inch voice coil diameter, titanium diaphragm neodymium magnet tweeter.

POWER & CONTROL

200 W continuous power in musical program.

An accurate internal passive crossover achieves an optimum performance while including a protection on high frequency driver.

Double Speakon NL4MP® (input & link).

Recommended presets available for DSP206, DSP608,

LMS206, LMS608 and TPD.

DESIGN & ACCESSORIES

1,5mm speaker grille with black mesh, exclusively designed with an optimum perforation gradient and attractive appearance.

Multilayer birch plywood cabinet with Polyurea® coating, offering maximum reliability and strength for touring as well as for high demanding applications.

M8 rigging points for easy flying.

35mm diameter pole mount socket mounted on the bottom side, for a standard tripod.

TECHNICAL FEATURES

| | |
|-----------------------------|---|
| Power (musical program) | 200 W |
| Power (r.m.s) | 100 W |
| Nominal Impedance | 8 Ω or 16 Ω available |
| SPL(1W/1m) | 92 dB |
| Maximum SPL (continuous/1m) | 115 dB |
| Maximum SPL (peak/1m) | 118 dB |
| Crossover frequency | 3k3 Hz |
| Frequency Response (-10dB) | 64 Hz – 20 kHz |
| Components | LF - MF HF |
| | 6" neodymium woofer with carbon fiber cone (1,5" voice coil) 1" titanium diaphragm neodymium tweeter |
| Directivity (H x V) | 90° x 70° |
| Directivity factor (Q) | 12.6 |
| Directivity Index (DI) | 11 dB |
| Weight | 5,4 kg |
| Finish | Multilayer birch plywood with high resistant black Polyurea® coating |
| Dimensions (H x W x D) | 370 x 220 x 226 mm |
| Grille | 1,5 mm steel with black acoustic mesh |
| Rigging | M8 points |
| Connectors | 1x Speakon NL4MP input / 1x Speakon NL4MP link |
| Available colors | Black and white |

DISCOVER NÍTiD



UNIQUE DESIGN

Distinguishing details include the speaker grille, exclusively designed for an attractive appearance, maximum protection, and with **the best performance coefficient in the market, for improved sound quality**. The Polyurea® finish offers durable protection for the birch-ply cabinet. A wide range of accessories is provided for whatever your application is.



THE PERFECT BALANCE

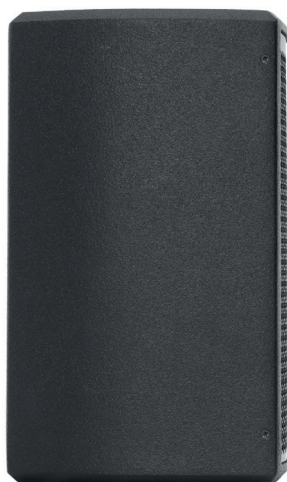
NÍTiD series is the culmination of an intensive program of research, development and optimization, to achieve the greatest possible power and performance from the most compact sized cabinet. Every aspect of its form factor has resulted from examination and consideration of optimum acoustic response, ergonomics, construction and appearance.



TOP VIEW



BOTTOM VIEW



SIDE VIEW

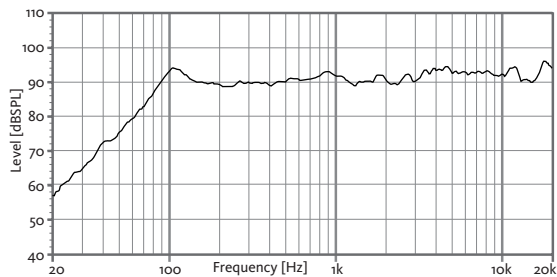


FRONT VIEW

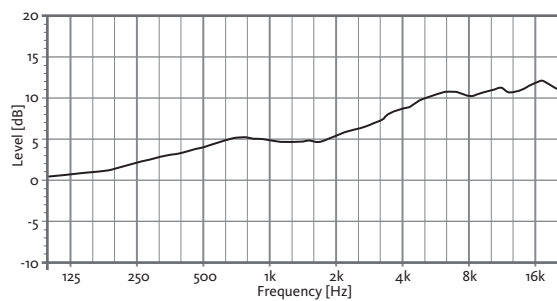


REAR VIEW

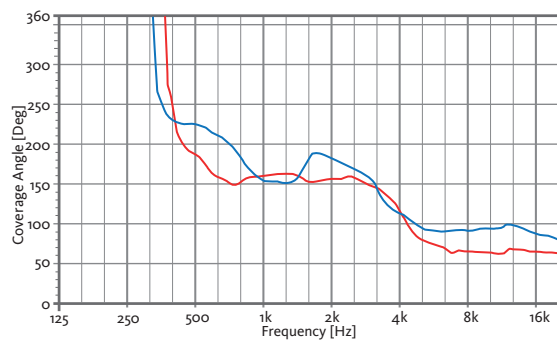
FREQUENCY RESPONSE 1W/1m



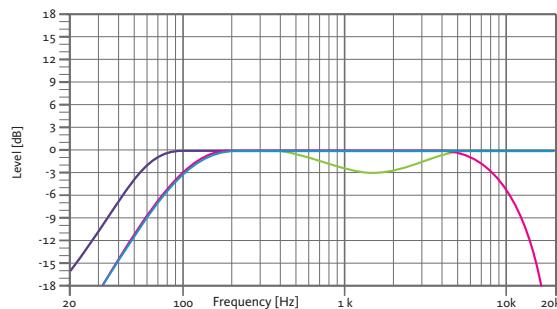
DIRECTIVITY INDEX (DI)



HORIZONTAL & VERTICAL BEAMWIDTH (-6dB point)



HORIZONTAL VERTICAL

RECOMMENDED PRESETS
with external Amate Audio DSP

FLAT

Flat response

NEARFIELD

-3 dB mid frequencies
(400 Hz – 4 kHz)

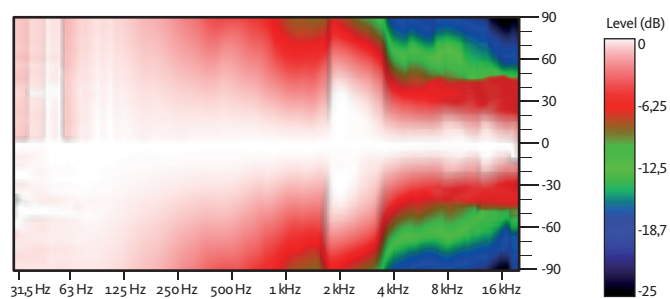
SPEECH

HPF 100 Hz
LPF 8 kHz

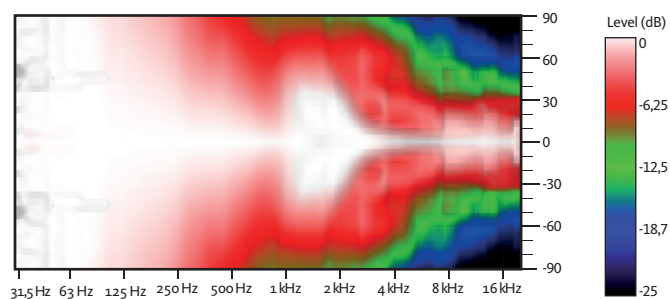
XOVER

HPF 100 Hz

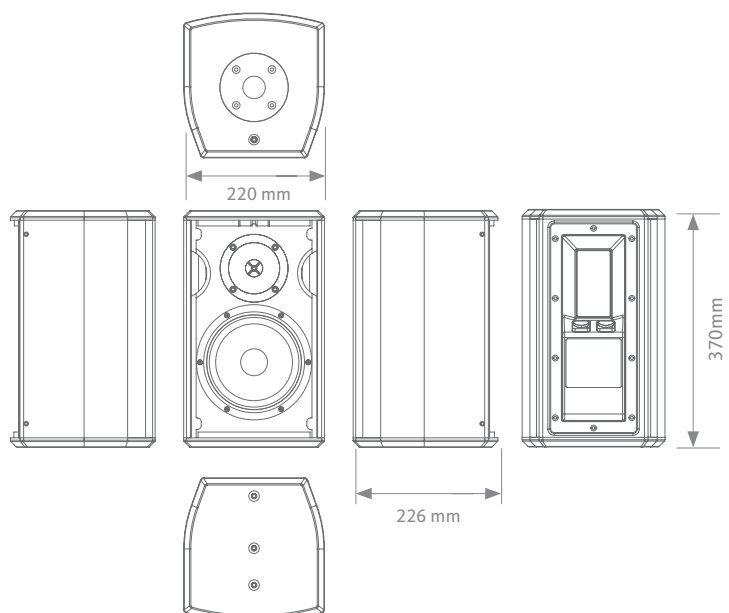
HORIZONTAL COVERAGE



VERTICAL COVERAGE



CAD DRAWING SCHEME



RECOMMENDED CONFIGURATIONS

FOR S6P/8Ω (4 units)

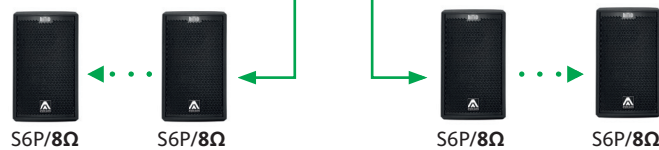
Connect the amplifier's output to the Speaker's input of the first cabinet. Then, make a bridge from the first cabinet to the second one. This configuration allows you to connect up to four cabinets to the same amplifier.

FOR S6P/16Ω

Connect the amplifier's output to the Speaker's input of the first cabinet. Then, make a bridge from the first cabinet to the second one and thus, sequentially. This configuration allows you to connect up to eight cabinets to the same amplifier.

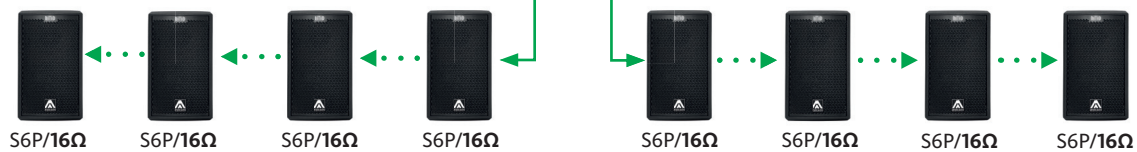
DSP206 / DSP608
LMS206 / LMS608

HD800
Stereo mode

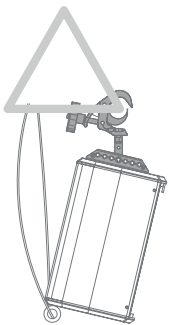


DSP206 / DSP608
LMS206 / LMS608

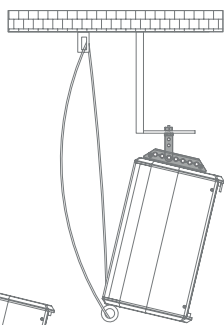
HD2000
Stereo mode



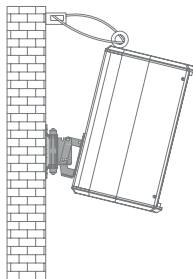
VERTICAL TRUSS-MOUNT
HR-S/GT + SC-15



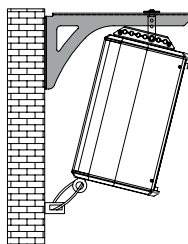
VERTICAL COLUMN-MOUNT
HR-S + SC-15



VERTICAL WALL-MOUNT
SP-6N + SC-15



VERTICAL WALL-MOUNT
SP-WHR + SC-15



ACCESSORIES

FLYING BAR
HR-S



FLYING BAR
WITH HOOK
HR-S/GT



TELESCOPIC
DISTANCE ROD
SP-CRTL
ø: 35 mm
Length:
55 cm ~ 90 cm
Thread: M20



SAFETY SLING
SC-15



WALL MOUNT
BRACKET
SP-6N



WALL-MOUNT
BRACKET
SP-WHR

