

X212AFD

2x 12" THREE-WAY ACTIVE LINE
ARRAY SPEAKER SYSTEM

XCELLENCE



The X212AFD is the flagship of the Xcellence series and the epitome of audio perfection performance. Breakthrough technologies, cutting-edge acoustic design, the highest quality, precision-engineered, in-built DSP with F.I.R. filters, tailor-made components and materials and Dante networking.

KEY FEATURES

TRANSDUCER TECHNOLOGY

Three-way line array active speaker system composed by two direct radiating 3-inch voice coil, neodymium magnet 12" loudspeakers, four 1.5-inch voice coil, neodymium magnet 6" loudspeakers mounted on two mid frequency phase plugs and two 3-inch voice coil, titanium diaphragm, neodymium magnet compression drivers coupled to a 100° x 8° exclusive high performance waveguide.

AMPLIFICATION

4000 W 3rd generation Class D built-in amplifier controlled by a dedicated multichannel DSP.

90% efficiency amplifier SMPS (switching mode power supply), allowing maximum power delivery with minimum consumption in an extremely low-weight and reduced size.

Rear connections and control panel with touch screen to display the different settings, presets, volume and adjustments done by the user.

Exclusive and unique Overvoltage Protection which continuously monitors line voltage and instantly disconnects the system if the line voltage exceeds the maximum permissible level.

Automatic low power consumption mode (EcoMode) available, when no signal present at the input.

Double PowerCon (input link)

Maximum 1 cabinet linked.

DSP & CONTROL

Internal DSP with all necessary signal processing (crossovers, EQ's, delay, limiters, gain control, mute) as well as several useful presets to adjust the X212AFD to different requirements.

Advanced signal processing using F.I.R. (Finite Impulse Response) filters.

Automatic input overload prevention circuit: prevents overloading the A/D converter input.

Double Ethernet connection with integrated Ethernet switch. Wireless control available through external hardware CWK-D: the system can be monitored from any spot in the room.

New DSPstudio® control software capable of adjusting and setting-up even the finest details and monitoring key parameters of the amplifier: input and output levels, limiter engagement, amplifier temperature and status, and network connection status.

Dante™ Input available at both RJ-45 ports. The unit can be connected directly to Dante sources over a wired Ethernet network

DESIGN & ACCESSORIES

Several accessories allow easy flying and stacking.

Connectors are placed on an inclined plane to increase protection against rain or moisture.

Ergonomic handles for an easy and comfortable transport.

1.5 mm speaker grilles with grey micro-foam cloth, exclusively designed with an optimum perforation gradient and attractive appearance.

Multilayer Baltic birch plywood cabinet with Polyurea® coating, offering maximum reliability and strength for touring as well as for high demanding applications.

X212AFD

2x12" THREE-WAY ACTIVE LINE ARRAY SPEAKER SYSTEM

XCELLENCE



**DSP STUDIO CONTROL
FOR WINDOWS**



WITH CWK-D



**EXCLUSIVE HIGH
PERFORMANCE
WAVEGUIDE**



**EXCLUSIVE MID
PHASE PLUG**



**LIGHT NEODYMIUM
COMPONENTS**



**> 250 V
OVERVOLTAGE
PROTECTION**



**MULTIPLE PRESETS
AVAILABLE**



**HIGH RESISTANT
POLYUREA® PAINT**



**ACCESSORIES FOR
EASY INSTALLATIONS**

TECHNICAL FEATURES

Amplifier (program power)	2000 W (LF) + 1000 W (MF) + 1000 W (HF) Class D Tri-amplified
Analog input	Nominal: +8dBu. Max: +20dBu. Impedance: 20kΩ Balanced
Audio networking	Dante™ audio networking input, 1 channel, 48kHz
Mains	Universal Switch Mode Power Supply 85-265 V / 45-65 Hz
Average current draw	3.7 A (Heavy duty musical program)
SPL (1 m)	141 dB continuous musical program, 144 dB peak
Built-in DSP	64-bit processing unit. Includes factory presets
AD/DA converters	24 bit – 48 kHz
Standby mode consumption	< 5 W
Adjustable delay line	294 ms / 100 m
Crossover frequency	200 Hz / 1 kHz
Frequency response (-10 dB)	42 Hz – 18 kHz
Components	LF 2x 12" neodymium woofers (3" voice coil) MF 4x 6" neodymium woofers (1.5" voice coil) HF 2x 3" titanium diaphragm, neodymium magnet compression drivers
Directivity (-6dB)	100° (H) x 8° (V)
Directivity factor (Q)	64
Directivity index (DI)	18 dB
Weight	64.6 kg
Dimensions (HxWxD)	372 x 1100 x 657 mm
Finish	Multilayer baltic birch plywood with high resistant black Polyurea® coating
Grille	1.5 mm steel with grey micro-foam cloth
Rigging	Stainless-steel black painted integrated rigging bars
Connectors	1x XLR input / 1x XLR link / 1x AC PowerCon® input / 1x AC PowerCon® link / 1 x EtherCon® RJ45 input / 1 x EtherCon® RJ45 link



SIDE VIEW



FRONTAL VIEW WITHOUT GRILLES



TOP VIEW



REAR VIEW

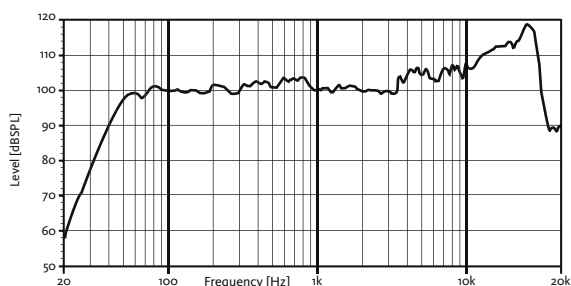
X212AFD

2x12" THREE-WAY ACTIVE LINE
ARRAY SPEAKER SYSTEM

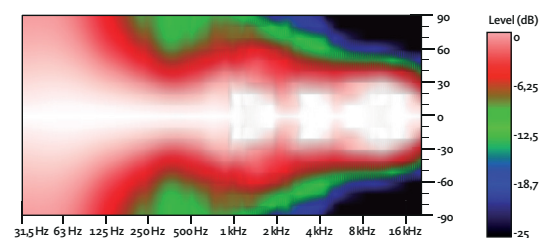
XCELLENCE



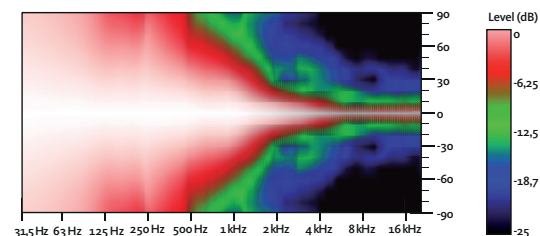
FREQUENCY RESPONSE 1w/1m (HP60_FLAT PRESET) ONE CABINET



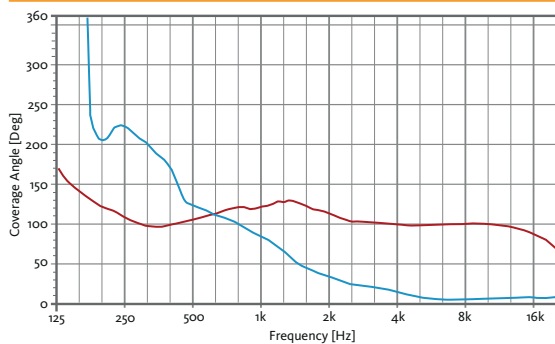
HORIZONTAL COVERAGE



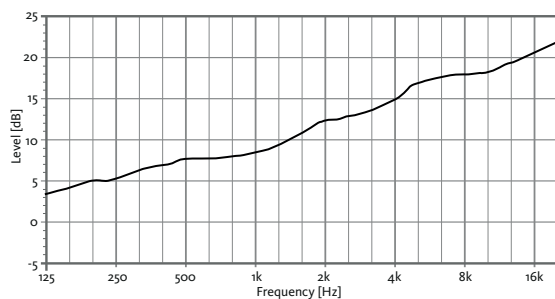
VERTICAL COVERAGE



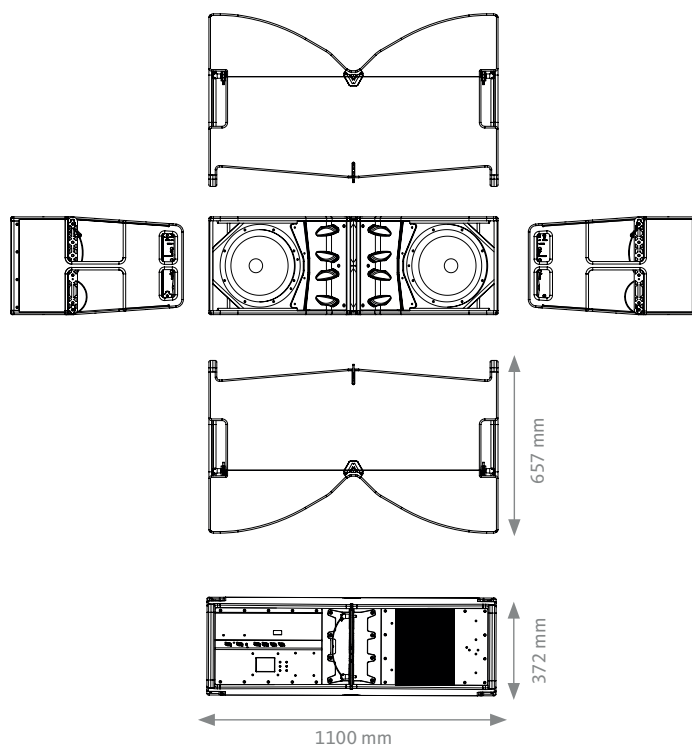
HORIZONTAL & VERTICAL BEAMWIDTH (-6dB point)



DIRECTIVITY INDEX (Di)



CAD DRAWING SCHEME



CONTROL PANEL



X212AFD

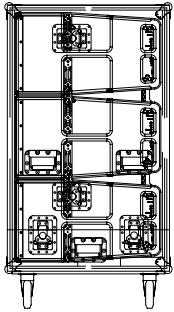
2x12" THREE-WAY ACTIVE LINE
ARRAY SPEAKER SYSTEM

XCELLENCE

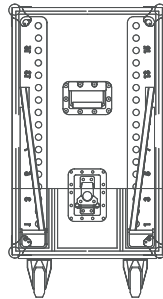


ACCESSORIES

FLIGHT CASE FC-X212AF
For three units of X212AFD



FLIGHT CASE FC-TAX212
For two units of TA-X212



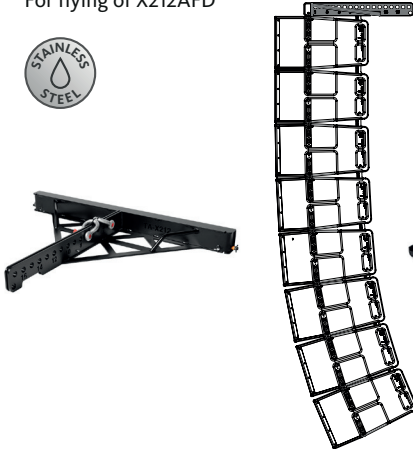
TROLLEY TR-X212
For four units of X212AFD. Includes protection cover



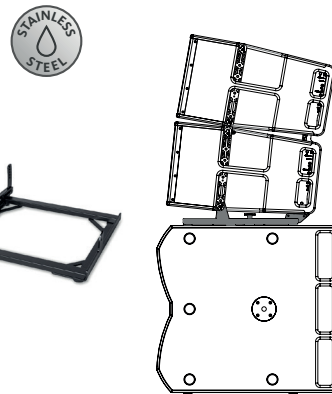
FRAME ADAPTOR FA-X210/212
For X210 underneath X212AFD



TOURING BUMPER TA-X212
For flying of X212AFD



STACKING FRAME FR-X212
For X212AFD over X218WFD



WIRELESS COMMUNICATION KIT CWK-D

Bespoke control protocol that supports Wi-Fi* connectivity through CWK-D (*Wi-Fi not available when using Dante networking)



DSP STUDIO 3



The application utilises a bespoke control protocol that supports Wi-Fi connectivity (control over IP).

It allows to address the ethernet-enabled amp and DSP modules in the Xcellence series cabinets, affording the user visual feedback on amplifier status and the ability to edit processor values from any spot in the venue.

You can edit parameters such as crossover frequency, gain (per way and separately mutable), limiter, polarity, delay, five custom parametric EQs or an array of filter shapes, can all be adjusted in fine detail, with several elements controllable at the same time using grouping functions.

The app also provides comprehensive information about input and output levels, heat-sink temperature, clip and protection indicators.

"Instant access to outstanding sound"

1

Configure your
wifi network

2

Detect
loudspeakers

3

Setup audio
settings

4

Enjoy the
best sound



Download it from our website: www.amateaudio.com

Dante™ is a trademark of Audinate Pty Ltd.