



JK12

The perfect balance!
Superb vocal articulation, powerful low end and crystal clear
high frequencies give JK12 a unique balance in its class.

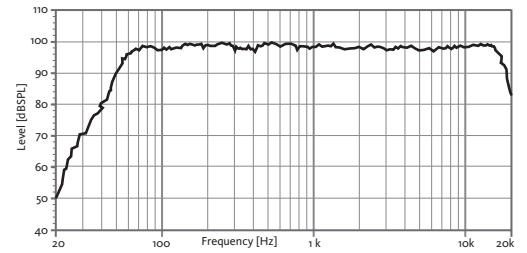
¡El equilibrio perfecto!
Inmejorable articulación vocal, graves poderosos y agudos cristalinos,
le confieren a la JK12 un equilibrio único en su clase.



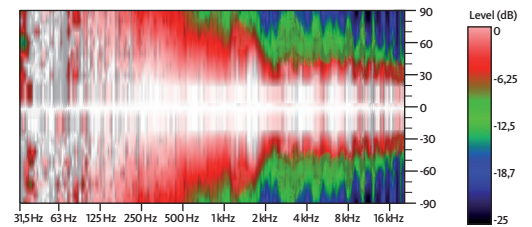
TECHNICAL FEATURES JK12 PASSIVE

Power (musical program)	700 W
Nominal Impedance	8 Ω
SPL (1 m)	98 dB (1 W), 126 dB continuous 129 dB peak
Frequency response (-10 dB)	48 Hz – 19 kHz
Components	LF-MF 12" woofer (3" voice coil) HF 1.75" PETP diaphragm Neodymium driver
Directivity (HxV)	50° to 100° x 55°
Dimensions (HxWxD)	609 x 410 x 405 mm
Weight	21.7 kg
Finish	Multilayer plywood 1.5 mm optimized steel grille with foam High resistant bi-component black Polyurea® coating

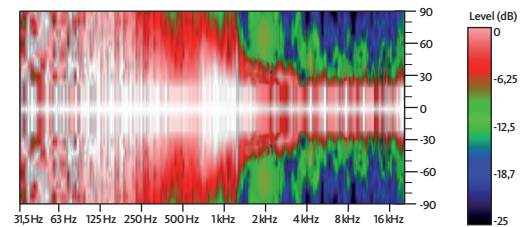
FREQUENCY RESPONSE 1W/1m (FLAT PRESET) *



HORIZONTAL COVERAGE



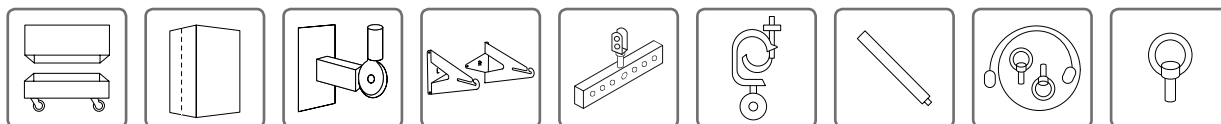
VERTICAL COVERAGE



*With an external Amate Audio DSP



ACCESSORIES



FC-JK12 NC-JK12 SP-35 UB-L HR-1215 GT-50HR SP/CRTL SC-15 ACR-M8