



JK12A

The perfect balance!
Superb vocal articulation, powerful low end and crystal clear
high frequencies give JK12A a unique balance in its class.

¡El equilibrio perfecto!
Inmejorable articulación vocal, graves poderosos y agudos cristalinos,
le confieren a la JK12A un equilibrio único en su clase.

JK12A 12" TWO-WAY ACTIVE SPEAKER SYSTEM

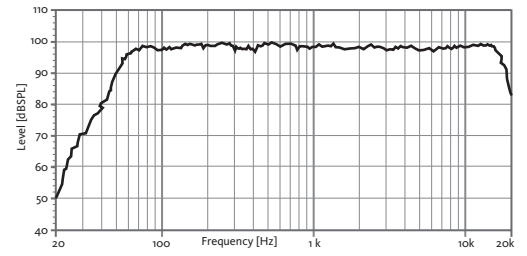


TECHNICAL FEATURES

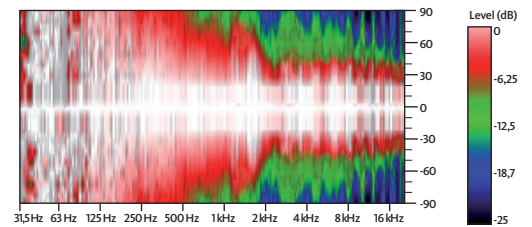
JK12A ACTIVE

Amplifier (program power)	600 + 100 W Class D Bi-amplified
Input sensitivity	8 dBu – 1.94 V
Input Impedance	20 kΩ Balanced
Maximum input level	20 dBu
Mains	Universal Switching Power Supply 85-265 V/45-65 Hz
Average current draw	0.7 A (Heavy duty musical program)
SPL (1 m)	126 dB continuous 129 dB peak
Built-in DSP	48 bit
Presets	FLAT / NEARFIELD / NEARFIELD + / LONGTHROW / SPEECH / XOPOLE / XOALL
AD/DA converters	24 bit – 48 kHz
Standby mode consumption	< 5 W
Adjustable Delay line	118 ms / 40 m
Frequency response (-10 dB)	48 Hz – 19 kHz
Components	LF-MF 12" woofer (3" voice coil) HF 1.75" PETP diaphragm Neodymium driver
Directivity (HxV)	50° to 100° x 55°
Dimensions (HxWxD)	609 x 410 x 405 mm
Weight	22.7 kg
Finish	Multilayer plywood 1.5 mm optimized steel grille with foam High resistant bi-component black Polyurea® coating

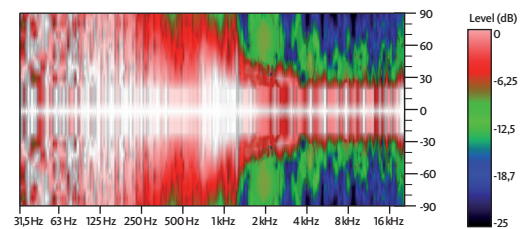
FREQUENCY RESPONSE 1W/1m (FLAT PRESET)



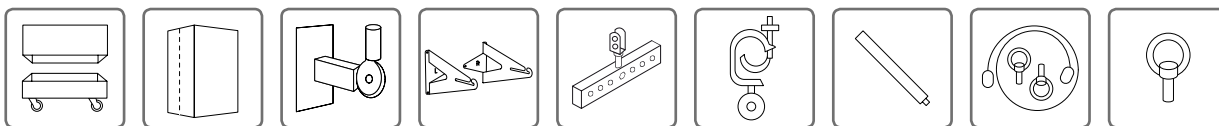
HORIZONTAL COVERAGE



VERTICAL COVERAGE



ACCESSORIES



FC-JK12 NC-JK12 SP-35 UB-L HR-1215 GT-50HR SP/CRTL SC-15 ACR-M8