

JOKER

JK12WA

12" ACTIVE COMPACT
SUBWOOFER

JOKER



JK12WA

Precise low-end in a small format.
Designed to have the best size-to-performance ratio.
The right solution for reduced spaces!

JK12WA

12" ACTIVE COMPACT SUBWOOFER



Best for reduced spaces



Horn loaded BAND PASS design

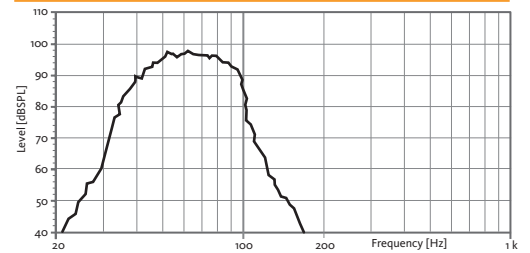


Multiple PRESETS available

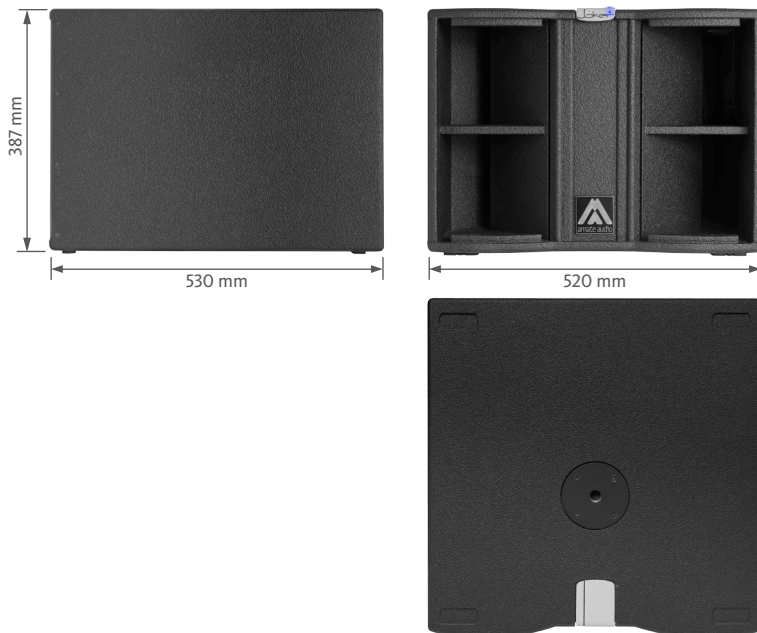
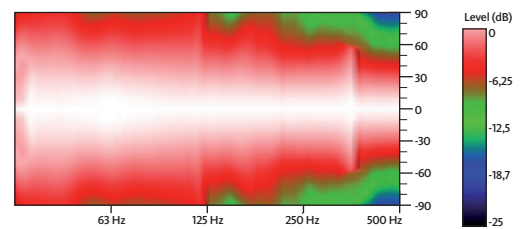
TECHNICAL FEATURES

Amplifier (program power)	500 W Class D
Input sensitivity	2 dBu – 1 V
Input Impedance	20 kΩ Balanced
Maximum input level	20 dBu
Mains	Universal Switching Power Supply 85-265 V/45-65 Hz
Average current draw	0.8 A (Heavy duty musical program)
SPL (1 m)	123 dB continuous 126 dB peak
Built-in DSP	48 bit
Presets	XOPOLE / LPF90 / LPF90+3 / LPF100 / LPF100+3 / LPF110 / LPF110+3/ LPF120 / LPF120+3
AD/DA converters	24 bit – 48 kHz
Standby mode consumption	< 5 W
Adjustable Delay line	118 ms / 40 m
Frequency response (-10 dB)	38 Hz – 90/100/110/120 Hz
Components LF	12" woofer (3" voice coil)
Directivity (HxV)	omnidirectional
Dimensions (HxWxD)	387 x 520 x 530 mm
Weight	25.6 kg
Finish	Multilayer plywood 1.5 mm optimized steel grille with foam High resistant bi-component black Polyurea® coating

FREQUENCY RESPONSE 1W/1m (LPF100+3 PRESET)



HORIZONTAL & VERTICAL COVERAGE

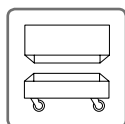


JK12WA

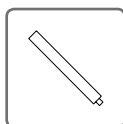


REAR VIEW

ACCESSORIES



FC-JK12W



SP/CRTL