

JK318A

THREE-WAY ACTIVE
SPEAKER SYSTEM

Joker



JK318A

**Out of the edge! 3000 W – a true three-way system
18" for a convincing low-end + 12" for superb mid-range
+ 1" for crystal clear high frequencies – release the beast!**

¡Rompiendo esquemas! 3000 W en un verdadero sistema de 3 vías.
18" para unos graves contundentes + 12" para una gama de medios inmejorables +
motor de 1" para unos agudos cristalinos. ¡Libera la bestia!

JK318A

THREE-WAY ACTIVE SPEAKER SYSTEM



Asymmetrical dispersion horn



3000 W self-powered 3-WAY System



Light neodymium components



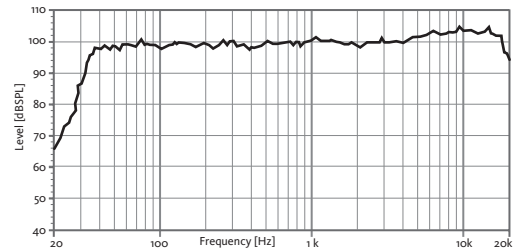
Multiple PRESETS available

TECHNICAL FEATURES

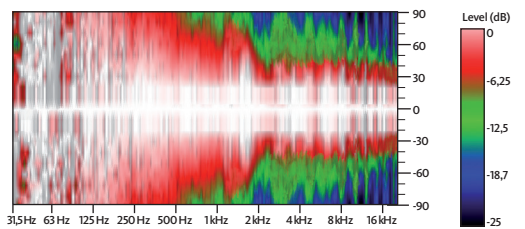
JK318A ACTIVE

Amplifier (program power)	2400 + 600 W Class D Bi-amplified
Input sensitivity	8 dBu – 1.94 V
Input Impedance	20 kΩ Balanced
Maximum input level	20 dBu
Mains	Universal Switching Power Supply 85-265 V/45-65 Hz
Average current draw	3.9 A (Heavy duty musical program)
SPL (1 m)	132 dB continuous, 135 dB peak
Built-in DSP	48 bit
Presets	FLAT / NEARFIELD / HF-3dB / LFBOOST / SPEECH
AD/DA converters	24 bit – 48 kHz
Standby mode consumption	< 5 W
Adjustable Delay line	118 ms / 40 m
Frequency response (-10 dB)	35 Hz – 19 kHz
Components	LF 18" Neodymium woofer (4" voice coil) MF 12" Neodymium woofer (3" voice coil) HF 1.75" PETP diaphragm Neodymium driver
Directivity (HxV)	50° to 100° x 55°
Dimensions (HxWxD)	1240 x 534 x 524 mm
Weight	59 kg
Finish	Multilayer plywood 1.5 mm optimized steel grille with foam High resistant bi-component black Polyurea® coating

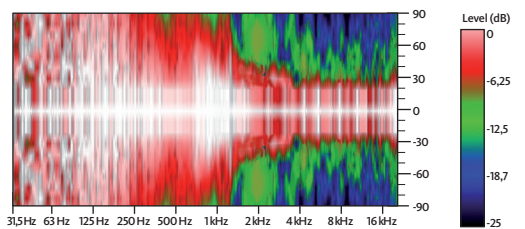
FREQUENCY RESPONSE 1W/1m (FLAT PRESET)



HORIZONTAL COVERAGE



VERTICAL COVERAGE



TOP VIEW

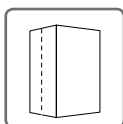


BOTTOM VIEW



REAR VIEW

ACCESSORIES



NC-JK318



ACR-M8