

KEY15W

1x15" DIRECT RADIATING
SUBWOOFER

KEY



KEY10 + KEY15W

**The KEY15W subwoofer is the ideal complement for enhancing bass response at medium-size venues.
The KEY15W opens the door to a convincing and accurate low end.**

HIGHLIGHTS

The KEY15W is a professional passive subwoofer system composed by 1x 15" woofer (3" voice coil and rubber surround).

Passive-parallel and/or bi-amplified use with KEY8, KEY10 and KEY12.

600 W continuous power, 1200 W peak power.

Connectors are placed on a 45° plane to effectively protect them from rain or moisture.

The cabinet is made in multilayer plywood and it is finished by matt waterbase black paint.

Front steel grille with acoustically transparent foam.

Ergonomic handles for an easy and comfortable transport.

An M20 plate for mounting a cabinet over the subwoofer is provided in the top side of the enclosure (for SP/CR distance rod stand).

Light and compact.

KEY15W

1x15" DIRECT RADIATING
SUBWOOFER

KEY



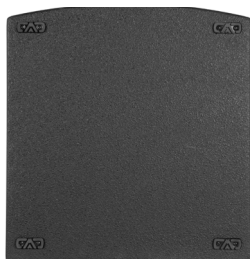
COMPACT & LIGHT



TIGHT BUDGET

TECHNICAL FEATURES

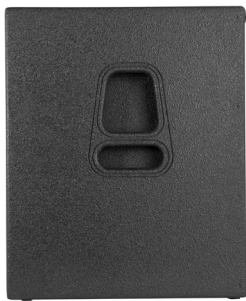
Power (rms)	300 W
Program	600 W
Peak	1200 W
Nominal impedance	8 Ω
Crossover frequency (recommended)	HPF: Butt - 40 Hz -18 dB/oct LPF: Butt - 90 Hz~130 Hz - 24 dB/oct
Frequency range (-10 dB)	38 Hz -180 Hz (with external DSP)
Directivity (HxV)	omnidirectional
Directivity factor (Q)	1
Directivity Index (DI)	0 dB
SPL (1W/1m)	95 dB
Maximum SPL (continuous/1 m)	123 dB
Maximum SPL (peak/ 1m)	126 dB
Components LF	1x 15" woofer with 3" voice coil and rubber surround
Enclosure	Multilayer plywood with waterbase black matt paint
Grill	1.5 mm stainless-steel with acoustically transparent foam
Input connectors	2 x NL4MPR Speakon
Dimensions (HxWxD)	600 x 490 x 520mm
Weight	27.1 kg



BOTTOM VIEW



INTERIOR VIEW without grill



SIDE VIEW



REAR VIEW



CONNECTION PANEL DETAIL



TOP VIEW

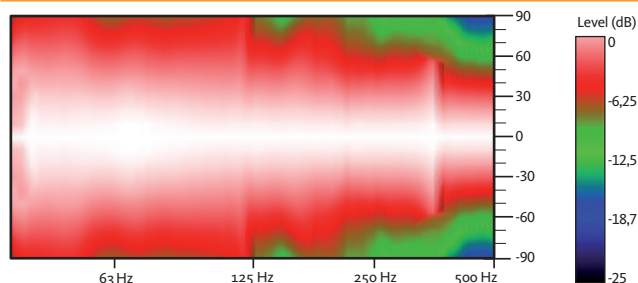
KEY15W

1x15" DIRECT RADIATING
SUBWOOFER

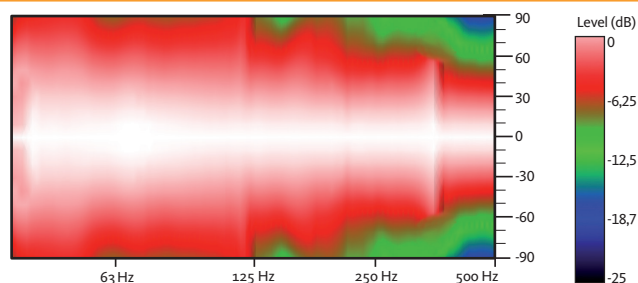
KEY



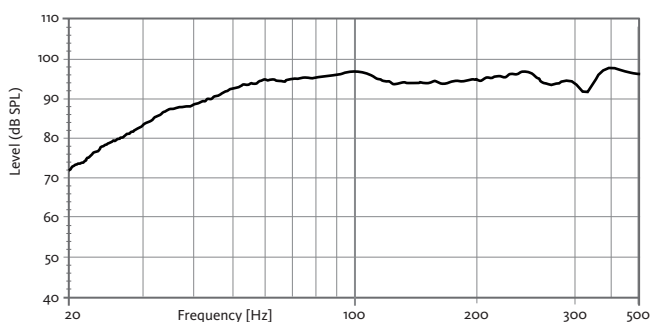
HORIZONTAL COVERAGE



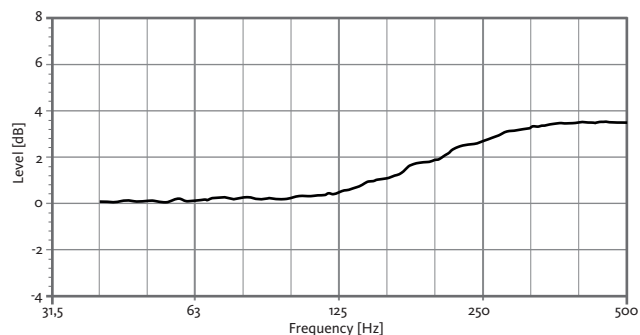
VERTICAL COVERAGE



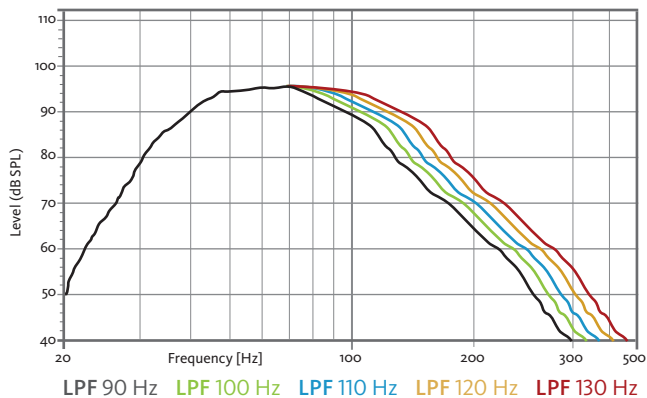
FREQUENCY RESPONSE 1W/1m



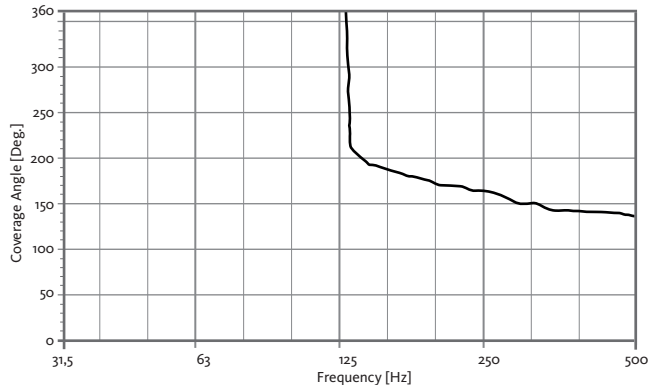
DIRECTIVITY INDEX (DI)



FREQUENCY RESPONSE 1W/1m (with external Amate Audio DSP)

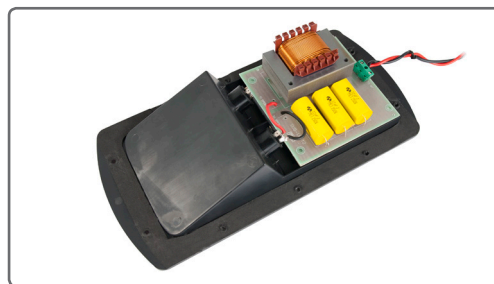
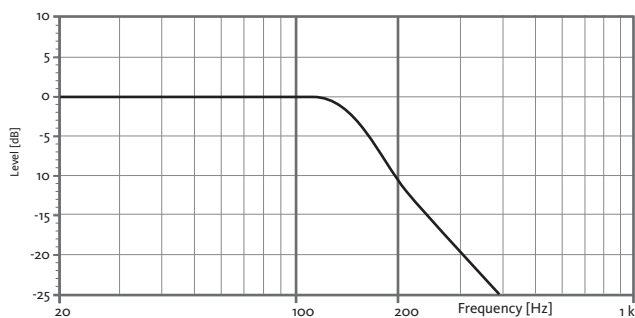


HORIZONTAL & VERTICAL BEAMWIDTH (-6 dB point)



OPTIONAL ACCESSORY

LFP-12: LOW-PASS FILTER 12dB/oct @ 180 Hz



KEY15W

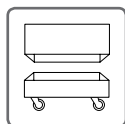
1x15" DIRECT RADIATING
SUBWOOFER

KEY

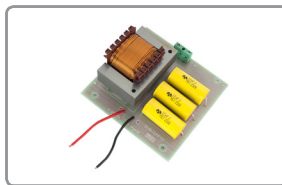
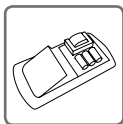


ACCESSORIES

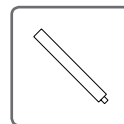
FLIGHT CASE FC-KEY15W



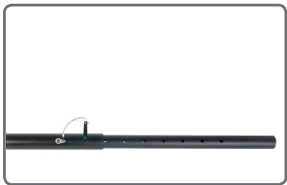
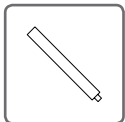
LOW-PASS FILTER LPF-12



DISTANCE ROD M20 SP-CR Ø 35 mm – length 90 cm – M20 thread



TELESCOPIC DISTANCE ROD SP-CRTL Ø 35 mm – length 55 cm ~ 90 cm – M20 thread



CAD DRAWING SCHEME

