



LIGHT
NEODYMIUM
COMPONENTS



ASYMMETRICAL
DISPERSION
HORN



VERSATILE SYSTEM
MAIN PA &
STAGE MONITOR



MULTIPLE
PRESETS
AVAILABLE



HIGH RESISTANCE
POLYUREA®
PAINT



ACCESSORIES
FOR EASY
INSTALLATIONS

Outstanding low weight and size to power ratio.
600 W in a reduced 10" two way biamplified system format tears down any excuse
to obtain a "big" sound in a small package.

KEY FEATURES

TRANSDUCERS TECHNOLOGY

Two-way full range active speaker system composed by one direct radiating 2,5-inch voice coil, neodymium magnet 10" loudspeaker and one 1,4-inch voice coil diameter, PETP diaphragm compression driver loaded to an asymmetrical rotational horn (50° to 100° x 55° dispersion).

AMPLIFICATION

600 W 3rd generation Class D built-in amplifier controlled by a dedicated DSP.

90% efficiency amplifier SMPS (switching mode power supply), allowing maximum power delivery with minimum consumption in an extremely low-weight and reduced size.

Rear connections and control panel with LCD screen to display the different settings, presets, volume and adjustments done by the user. Our SensitiveTouch® capacitive sensor keypad guarantees the reliability of the system even under humidity and extreme weather conditions.

Double PowerCon® (input & link).

DSP & CONTROL

Internal DSP with all necessary signal processing (crossovers, EQ's, delay, limiter, gain control, mute, input dynamic compressor) as well as several useful presets to adjust N10 to different requirements.

The on-screen output power display and the front NÍTiD backlight help to easily monitor the system. The backlight can be switched on or off, or set to indicate when the system is limiting.

ALC (Adaptative Loudness Compensation) to improve the listening experience when the cabinet is used at low musical levels.

ECO Mode available.

5-band EQ menu with five parametric equalizers.

DESIGN & ACCESSORIES

Ergonomic handles for an easy handling.

Trapezoidal shape for PA or stage monitor application.

2mm speaker grille with black mesh, exclusively designed with an optimum perforation gradient and attractive appearance.

Multilayer birch plywood cabinet with Polyurea® coating, offering maximum reliability and strength for touring as well as for high demanding applications.

M8 rigging points for easy flying.

35mm diameter pole mount socket mounted on the bottom side, for a standard tripod.

Protective rubber profiles.

TECHNICAL FEATURES

Amplifier (program)	500 W (LF) + 100 W (HF) Class D Bi-amplified
Input Sensitivity	8 dBu – 1.94 V
Input Impedance	20 kΩ Balanced
Maximum input level	20 dBu
Mains	Universal Switch Mode Power Supply 85-265 V / 45-65 Hz
Average current draw	0.7 A (Heavy duty musical program)
SPL (1 m)	125 dB continuous musical program, 128 dB peak
Built-in DSP	48-bit processing unit. Includes factory presets
AD/DA converters	24 bit – 48 kHz
Standby mode consumption	< 5 W
Adjustable delay line	118 ms / 40 m
Crossover frequency	2k4 Hz
Frequency response (-10 dB)	54 Hz – 19 kHz
Components	<div>LF - MF</div> <div>HF</div> <div>10" neodymium woofer (2.5" voice coil)</div> <div>1.4" PETP diaphragm compression driver</div>
Directivity (HxV)	50° to 100° x 55°
Directivity factor (Q)	12.6
Directivity Index (DI)	11 dB
Weight	14.5 kg
Dimensions (HxWxD)	543 x 310 x 335 mm
Finish	Multilayer birch plywood with high resistant black Polyurea® coating and protective rubber profiles
Grille	2 mm steel with black acoustic mesh
Rigging	M8 points
Connectors	1x XLR input / 1x XLR link / 1x AC PowerCon® input / 1x AC PowerCon® link



CONTROL PANEL

Our latest digital signal processing (DSP) is integrated with 3rd generation Class D amplification and operated via our dedicated SensitiveTouch™ keypad technology. With no mechanical components or moving parts, the SensitiveTouch™ capacitive sensor keypad is highly responsive, weatherproof and durable compared with conventional electronic controls and effectively failsafe. With the SensitiveTouch™ keypad and display, you can set-up the N10 in just seconds.



TOP VIEW



BOTTOM VIEW



SIDE VIEW

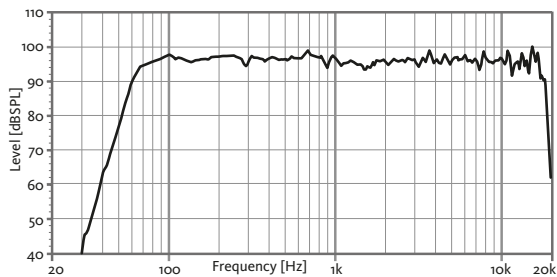


FRONT VIEW

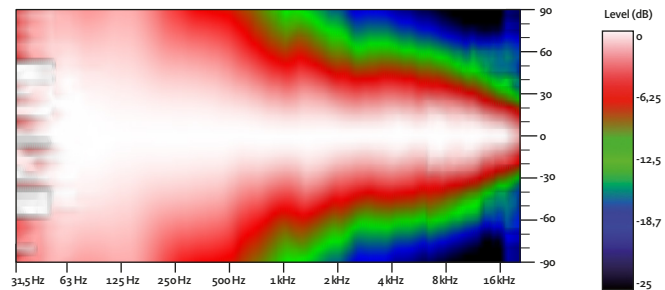


REAR VIEW

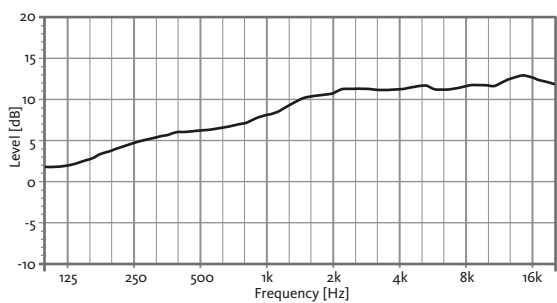
FREQUENCY RESPONSE 1W/1m (FLAT PRESET)



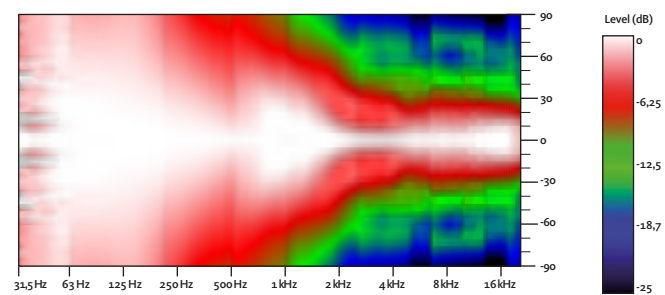
HORIZONTAL COVERAGE



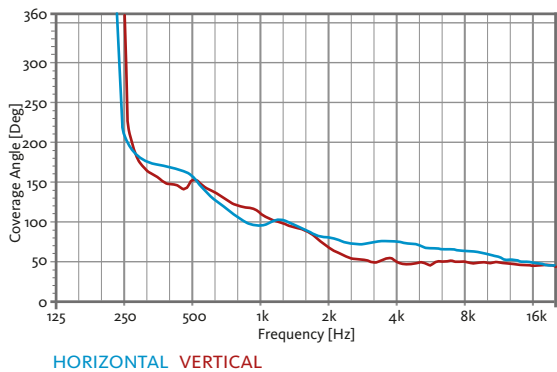
DIRECTIVITY INDEX (DI)



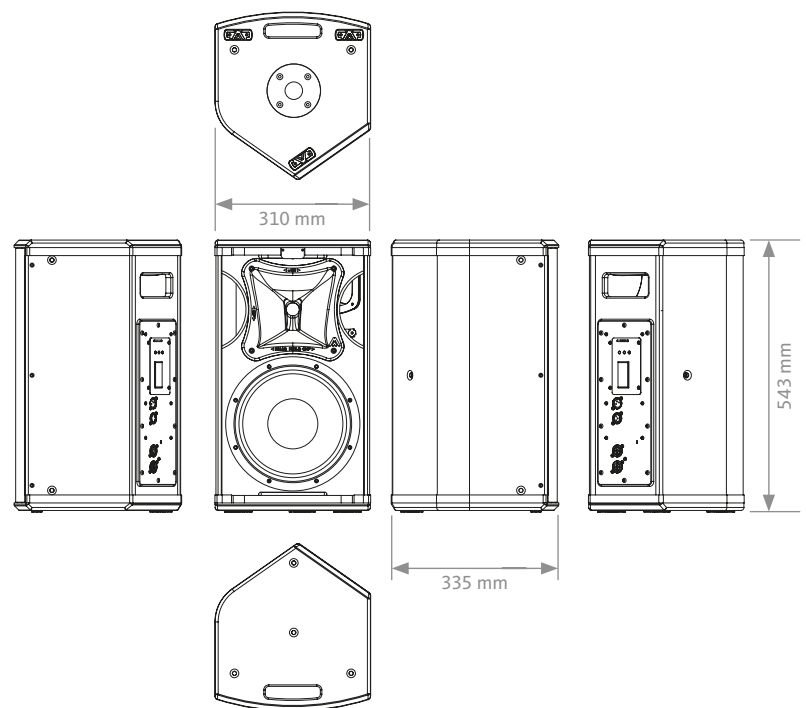
VERTICAL COVERAGE



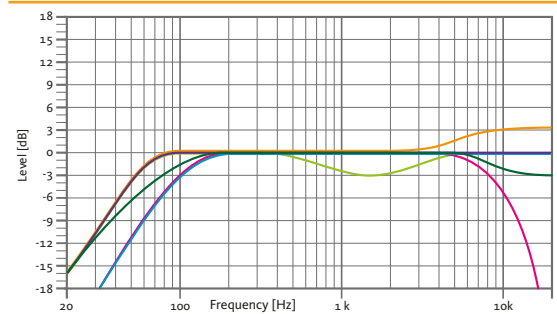
HORIZONTAL & VERTICAL BEAMWIDTH (-6dB point)



CAD DRAWING SCHEME



BUILT-IN PRESETS



FLAT

Flat response

NEARFIELD

-3 dB mid frequencies (400 Hz – 4 kHz)

LONGTHROW

+3 dB high frequencies

SPEECH

HPF 100 Hz

LPF 8 kHz

MONITOR

Stage monitor use

XOVER

HPF 100 Hz

ACCESSORIES

FLIGHT CASE

FC-N10

for two units of N10

WALL MOUNT
BRACKET

UB-L



FLYING BAR

HR-S

FLYING BAR
WITH HOOK

HR-S/GT

M8 RIGGING
EYEBOLT

ACR-M8

TELESCOPIC
DISTANCE ROD

SP-CRTL

ø: 35 mm
Length:
55 cm ~ 90 cm
Thread: M20



SAFETY SLING

SC-15



DISCOVER NÍTID

UNIQUE DESIGN

Distinguishing details include the speaker grille, exclusively designed for an attractive appearance, maximum protection, and with **the best perforation coefficient in the market, for improved sound quality**. The Polyurea® finish offers durable protection for the birch-ply cabinet, and electronic circuits and controls are smartly protected against moisture. A wide range of accessories is provided for whatever your application is.



THE PERFECT BALANCE

NÍTID series is the culmination of an intensive program of research, development and optimization, to achieve the greatest possible power and performance from the most compact sized cabinet. Every aspect of its form factor has resulted from examination and consideration of optimum acoustic response, ergonomics, construction and appearance.



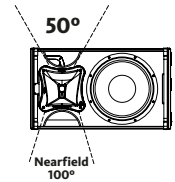
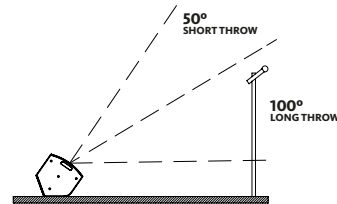
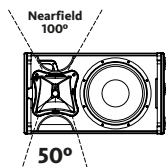
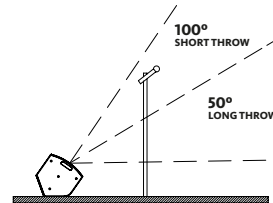
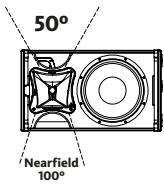
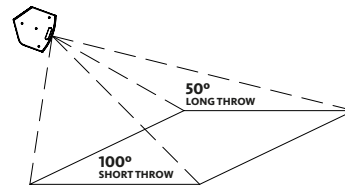
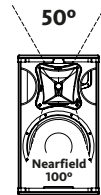
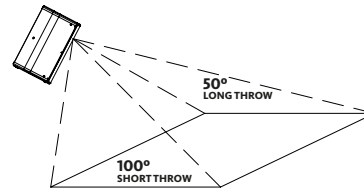
AMAZING PERFORMANCE

The integrated **'plug & play'** active power and control system includes DSP presets for rapid setup and amazing sound, and the comprehensive control interface includes instantly recallable presets for setting up the NÍTID in just a few seconds. The accurate match between transducers, DSP and amplifiers provide a fully optimized system for the most demanding applications.



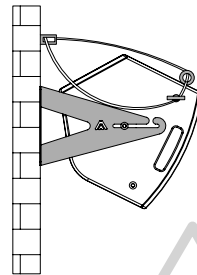
ASYMMETRICAL DISPERSION HORN

It allows to optimize the coverage depending on its position.



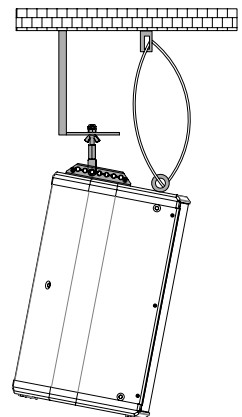
HORIZONTAL WALL-MOUNT

UB-L + SC-15



VERTICAL COLUMN-MOUNT

HR-S + SC-15



VERTICAL TRUSS-MOUNT

HR-S/GT + SC-15

