



ASYMMETRICAL  
DISPERSION  
HORN



VERSATILE SYSTEM  
MAIN PA &  
STAGE MONITOR



MULTIPLE PRESETS  
AVAILABLE with  
external Amate Audio  
amplifier & DSP



HIGH RESISTANCE  
POLYUREA®  
PAINT



ACCESSORIES  
FOR EASY  
INSTALLATIONS

The perfect compromise for any application.  
Main PA or stage monitoring! Superb vocal articulation, great low-end and crystal  
clear high frequencies give N12P a unique balance in its class.

## KEY FEATURES

### TRANSDUCERS TECHNOLOGY

Two-way full range passive speaker system composed by one direct radiating 3-inch voice coil, 12" loudspeaker and one 1,75-inch voice coil diameter, PETP diaphragm neodymium magnet compression driver loaded to an asymmetrical rotational horn (50° to 100° x 55° dispersion).

### POWER & CONTROL

1000 W continuous power in musical program.

An accurate internal passive crossover achieves an optimum performance while including a protection on high frequency driver.

Connectors are placed on an inclined plane to effectively protect them against rain or moisture.

Double Speakon NL4MPR® (input & link).

Recommended presets available for DSP206, DSP608 and TPD.

### DESIGN & ACCESSORIES

Ergonomic handles for an easy handling.

Trapezoidal shape for PA or stage monitor application.

2mm speaker grille with black mesh, exclusively designed with an optimum perforation gradient and attractive appearance.

Multilayer birch plywood cabinet with Polyurea® coating, offering maximum reliability and strength for touring as well as for high demanding applications.

M8 rigging points for easy flying.

35mm diameter pole mount socket mounted on the bottom side, for a standard tripod.

Protective rubber profiles.

NÍTID

n12P

12" TWO-WAY PASSIVE FULL-RANGE  
SPEAKER SYSTEM

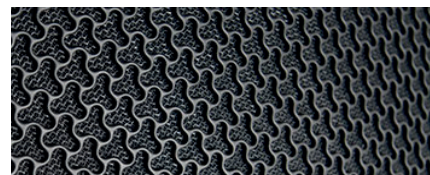
NÍTiD



## TECHNICAL FEATURES

Power (musical program)	1000 W
Power (r.m.s)	500 W
Nominal Impedance	8 $\Omega$
SPL(1W/1m)	98 dB
Maximum SPL (continuous/1m)	128 dB
Maximum SPL (peak/1m)	131 dB
Crossover frequency	2k Hz
Frequency Response (-10dB)	52 Hz – 19 kHz
Components	<div>LF - MF</div> <div>HF</div> <div>12" woofer (3" voice coil)</div> <div>1.75" PETP diaphragm neodymium magnet compression driver</div>
Directivity (H x V)	50° to 100° x 55°
Directivity factor (Q)	12.6
Directivity Index (DI)	11 dB
Weight	19.7 kg
Finish	Multilayer birch plywood with high resistant black Polyurea® coating and protective rubber profiles
Dimensions (H x W x D)	623 x 360 x 390 mm
Grille	2 mm steel with black acoustic mesh
Rigging	M8 points
Connectors	1x Speakon NL4MPR input / 1x Speakon NL4MPR link

## DISCOVER NÍTiD



## UNIQUE DESIGN

Distinguishing details include the speaker grille, exclusively designed for an attractive appearance, maximum protection, and with **the best performance coefficient in the market, for improved sound quality.** The Polyurea® finish offers durable protection for the birch-ply cabinet. A wide range of accessories is provided for whatever your application is.



## THE PERFECT BALANCE

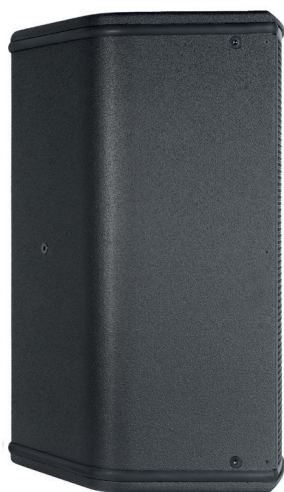
NÍTiD series is the culmination of an intensive program of research, development and optimization, to achieve the greatest possible power and performance from the most compact sized cabinet. Every aspect of its form factor has resulted from examination and consideration of optimum acoustic response, ergonomics, construction and appearance.



TOP VIEW



BOTTOM VIEW



SIDE VIEW

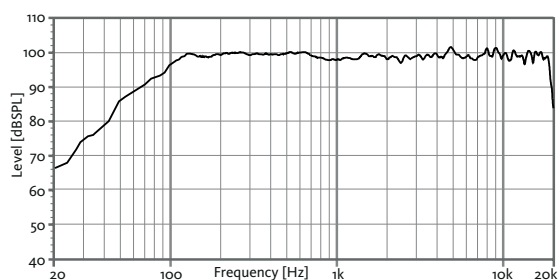


FRONT VIEW

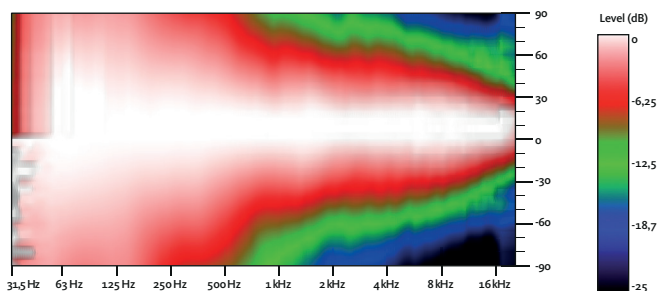


REAR VIEW

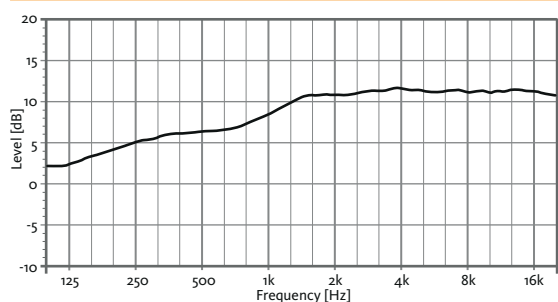
## FREQUENCY RESPONSE 1W/1m



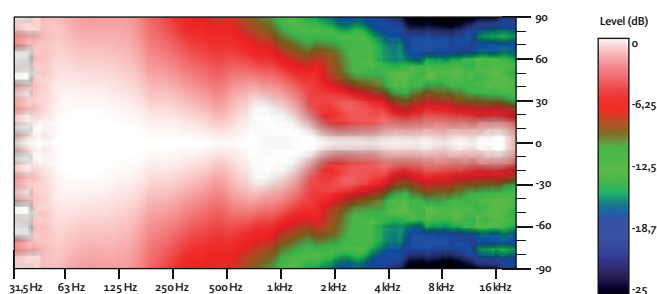
## HORIZONTAL COVERAGE



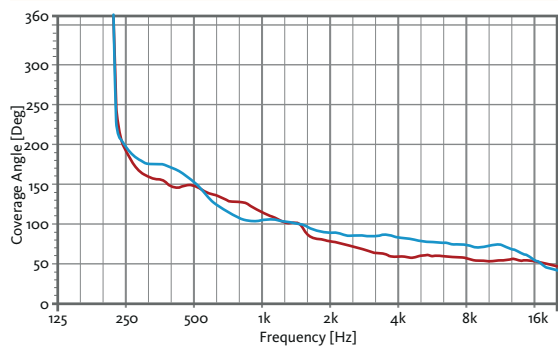
## DIRECTIVITY INDEX (DI)



## VERTICAL COVERAGE

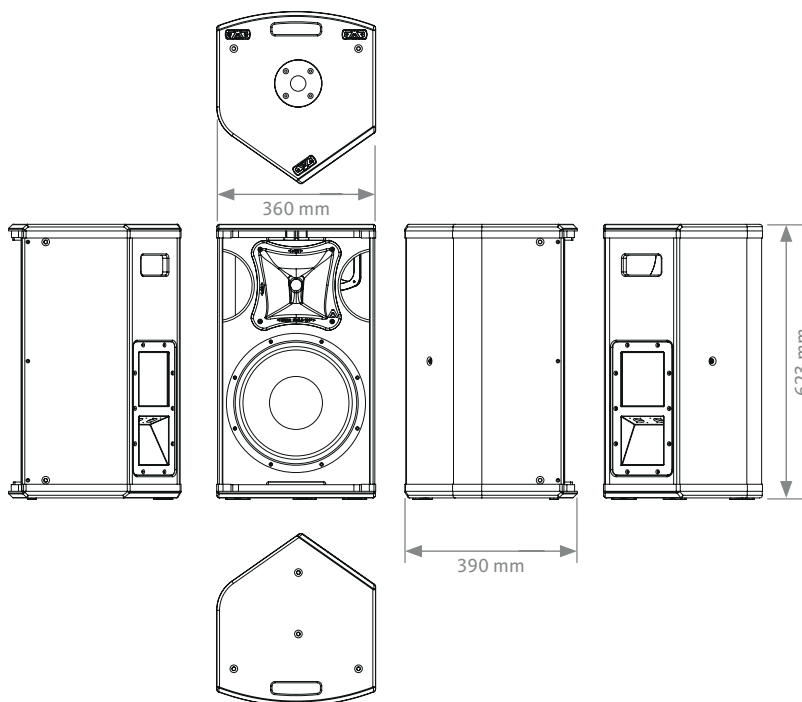
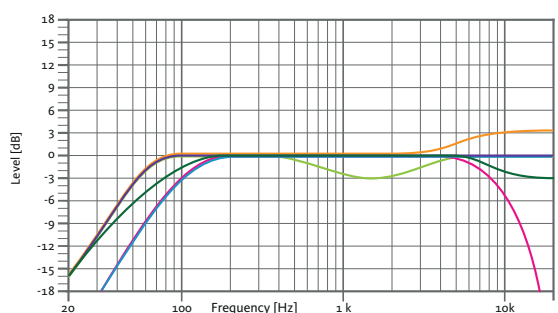


## HORIZONTAL &amp; VERTICAL BEAMWIDTH (-6dB point)



HORIZONTAL VERTICAL

## CAD DRAWING SCHEME

RECOMMENDED PRESETS  
with external Amate Audio DSP

## FLAT

Flat response

## NEARFIELD

-3 dB mid frequencies (400 Hz – 4 kHz)

## LONGTHROW

+3 dB high frequencies

## SPEECH

HPF 100 Hz

LPF 8 kHz

## MONITOR

Stage monitor use

## XOVER

HPF 100 Hz



## ACCESSORIES

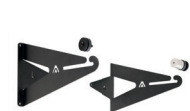
## FLIGHT CASE

FC-N12

for two units of N12P

WALL MOUNT  
BRACKET

UB-L



## FLYING BAR

HR-S

FLYING BAR  
WITH HOOK

HR-S/GT

M8 RIGGING  
EYEBOLT

ACR-M8



## SAFETY SLING

SC-15

TELESCOPIC  
DISTANCE ROD

SP-CRTL

ø: 35 mm  
Length:  
55 cm ~ 90 cm  
Thread: M20



## RECOMMENDED CONFIGURATION

## FOR N12P (2 units)

Connect each cabinet output of the amplifier LEFT/RIGHT to each cabinet using two independent wires

## FOR N12P (4 units)

Connect the amplifier's output to the Speakon's input of the first cabinet. Then, make a bridge from the first cabinet to the second one. This configuration allows you to connect up to four cabinets to the same amplifier.



DSP206 or DSP608

HD3200  
Stereo mode

N12P



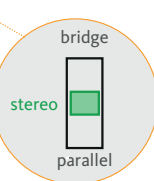
N12P



N12P

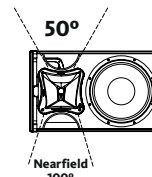
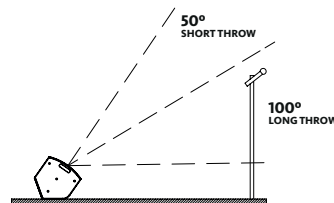
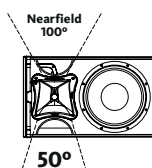
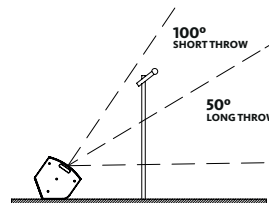
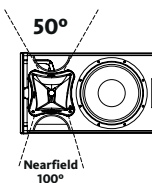
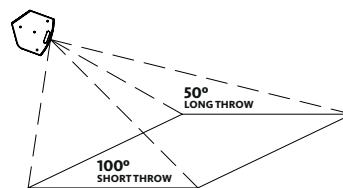
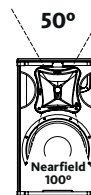
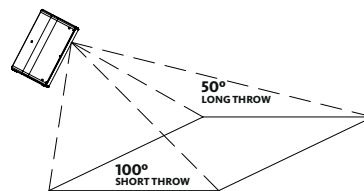
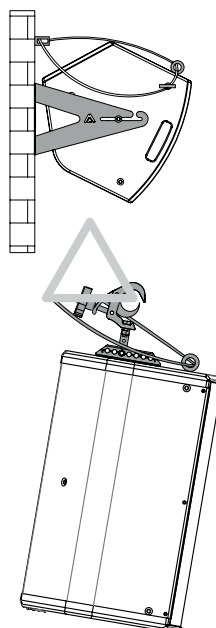
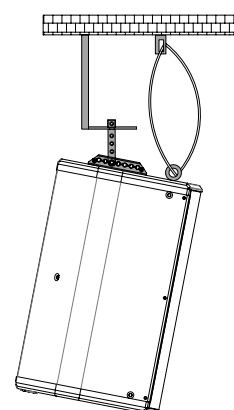


N12P



## ASYMMETRICAL DISPERSION HORN

It allows to optimize the coverage depending on its position.

HORIZONTAL WALL-MOUNT  
UB-L + SC-15VERTICAL COLUMN-MOUNT  
HR-S + SC-15VERTICAL TRUSS-MOUNT  
HR-S/GT + SC-15