



The N12SM is a highly portable, lightweight and powerful stage monitor with superb musical performance and pristine sound, offering outstanding full-range response, high SPL low-distortion mid and low range frequencies, thanks to its exceptional 12" LF and 1,75" HF neodymium transducers.

KEY FEATURES

TRANSDUCERS TECHNOLOGY

Two-way full range active speaker system composed by one direct radiating 3-inch voice coil, neodymium magnet 12" loudspeaker and one 1,75-inch voice coil diameter, PETP diaphragm neodymium magnet compression driver loaded to an asymmetrical horn (50° to 100° x 55° dispersion).

AMPLIFICATION

700 W 3rd generation Class D built-in amplifier controlled by a dedicated DSP.

90% efficiency amplifier SMPS (switching mode power supply), allowing maximum power delivery with minimum consumption in an extremely low-weight and reduced size.

Side connections and control panel with LCD screen to display the different settings, presets, volume and adjustments done by the user. Our SensitiveTouch® capacitive sensor keypad guarantees the reliability of the system even under humidity and extreme weather conditions.

Double PowerCon® (input & link).

DSP & CONTROL

Internal DSP with all necessary signal processing (crossovers, EQ's, delay, limiters, gain control, mute, input dynamic compressor) as well as several useful presets to adjust N12SM to different requirements.

The on-screen output power display and the front NITID backlight help to easy monitor the system. The backlight can be switched on or off, or set to indicate when the system is limiting.

ALC (Adaptative Loudness Compensation) to improve the listening experience when the cabinet is used at low musical levels.

ECO Mode available.

5-band EQ menu with five equalizers.

DESIGN & ACCESSORIES

Ergonomic handles for an easy handling.

Double position for adaptable coverage.

2 mm speaker grille with black mesh, exclusively designed with an optimum perforation gradient and attractive appearance.

Multilayer birch plywood cabinet with Polyurea® coating, offering maximum reliability and strength for touring as well as for high demanding applications.

Protective rubber profiles.



LIGHT NEODYMIUM
COMPONENTS



ASYMMETRICAL
DISPERSION HORN



MULTIPLE
PRESETS
AVAILABLE



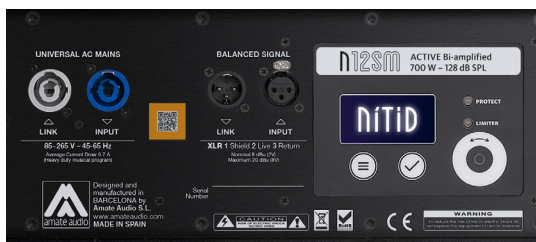
HIGH RESISTANCE
POLYUREA® PAINT



DOBLE POSITION
FOR ADAPTABLE
COVERAGE

TECHNICAL FEATURES

Amplifier (program)	600 W (LF) + 100 W (HF) – Class D Bi-amplified				
Input Sensitivity	8 dBu – 1.94 V				
Input Impedance	20 kΩ Balanced				
Maximum input level	20 dBu				
Mains	Universal Switch Mode Power Supply 85-265 V / 45-65 Hz				
Average current draw	0.7 A (Heavy duty musical program)				
SPL (1 m)	128 dB continuous musical program, 131 dB peak				
Built-in DSP	48-bit. Includes factory presets				
AD/DA converters	24 bit – 48 kHz				
Standby mode consumption	< 5 W				
Adjustable delay line	118 ms / 40 m				
Crossover frequency	1k8Hz				
Frequency response (-10 dB)	58 Hz - 19 kHz				
Components	<table border="0"> <tr> <td>LF - MF</td> <td>12" neodymium woofer (3" voice coil)</td> </tr> <tr> <td>HF</td> <td>1.75" PETP diaphragm neodymium driver</td> </tr> </table>	LF - MF	12" neodymium woofer (3" voice coil)	HF	1.75" PETP diaphragm neodymium driver
LF - MF	12" neodymium woofer (3" voice coil)				
HF	1.75" PETP diaphragm neodymium driver				
Directivity (HxV)	50° to 100° x 55° assymetrical				
Directivity factor (Q)	12.6				
Directivity Index (DI)	11 dB				
Weight	18 kg				
Dimensions (HxWxD)	459 x 364 x 570 mm				
Finish	Multilayer birch plywood with high resistant black Polyurea® coating and protective rubber profiles.				
Grille	2 mm steel with black acoustic mesh				
Rigging	No				
Connectors	1 x XLR input / 1x XLR link / 1x AC PowerCon input / 1x AC PowerCon link				



CONTROL PANEL

Our latest digital signal processing (DSP) is integrated with 3rd generation Class D amplification and operated via our dedicated SensitiveTouch™ keypad technology. With no mechanical components or moving parts, the SensitiveTouch™ capacitive sensor keypad is highly responsive, weatherproof and durable compared with conventional electronic controls and effectively failsafe.

With the SensitiveTouch™ keypad and display, you can configure the N12SM for use on-stage in just in seconds.



RIGHT SIDE VIEW



FRONT VIEW WITHOUT GRILLE

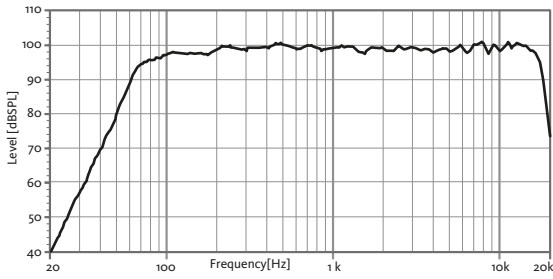


LEFT SIDE VIEW

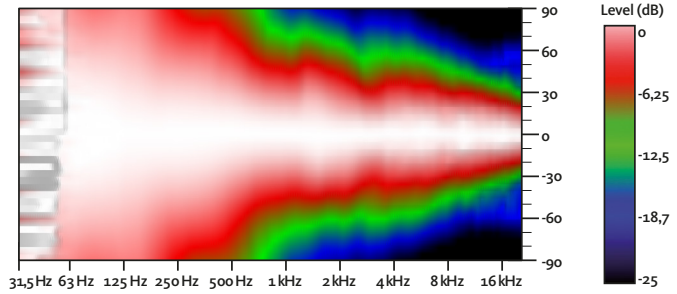


REAR VIEW

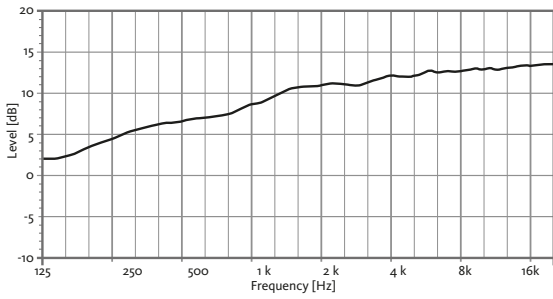
FREQUENCY RESPONSE 1w/1m (FLAT PRESET)



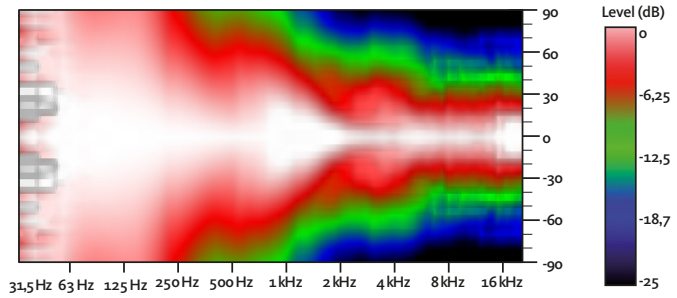
HORIZONTAL COVERAGE



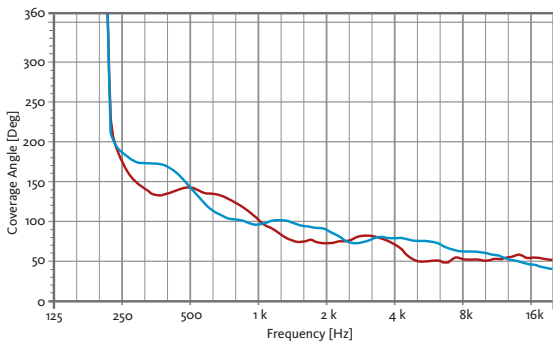
DIRECTIVITY INDEX (DI)



VERTICAL COVERAGE

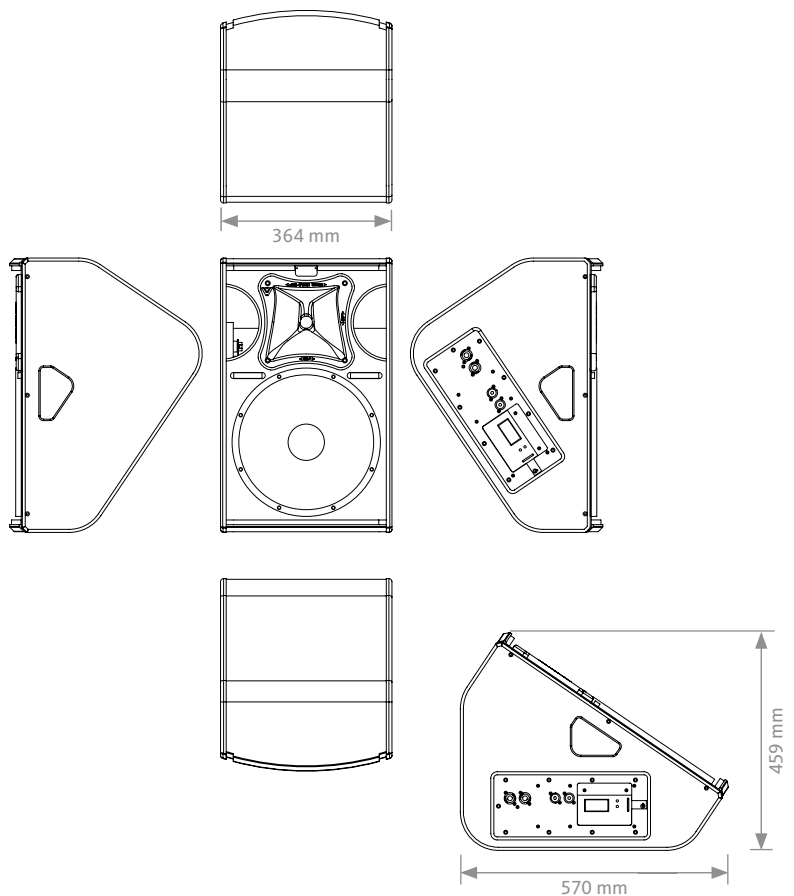


HORIZONTAL & VERTICAL BEAMWIDTH (-6dB point)

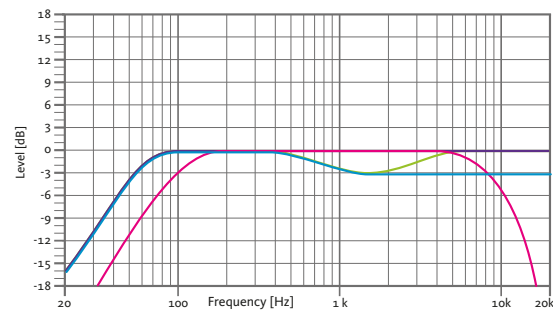


HORIZONTAL VERTICAL

CAD DRAWING SCHEME



BUILT-IN PRESETS



- FLAT**
Flat response
- SPEECH**
HPF 100 Hz
LPF 8 kHz

- NEARFIELD**
-3 dB mid frequencies
(800 Hz – 3 kHz)
- SMOOTH**
-3 dB mid and high frequencies

ACCESSORIES

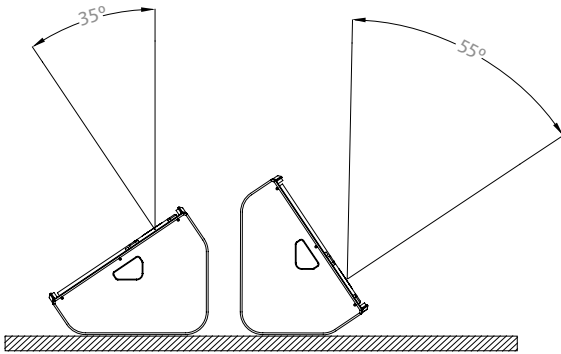
FLIGHT CASE

FC-N12SM

for two units of N12SM

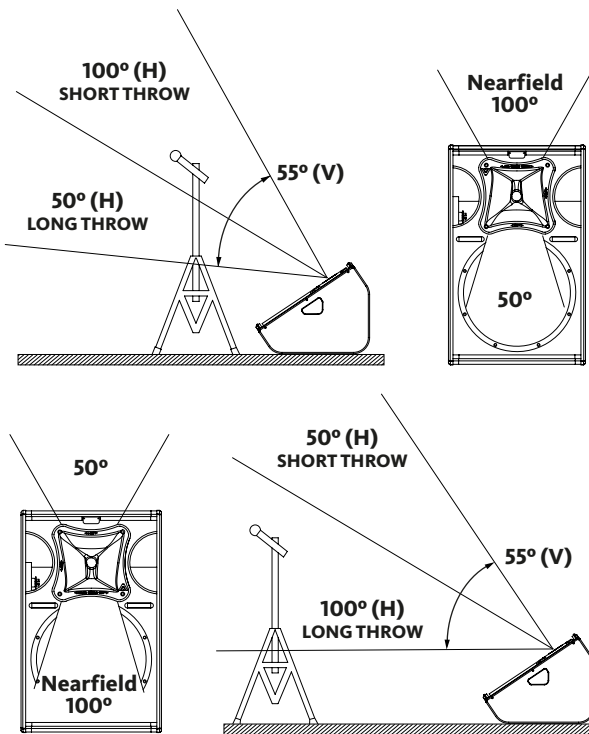


DOUBLE POSITION MONITOR



ASSYMETRICAL DISPERSION HORN

It allows to optimize the coverage depending on its position.



H: Horizontal dispersion

V: Vertical dispersion

DISCOVER NÍTID

UNIQUE DESIGN

Distinguishing details include the speaker grille, exclusively designed for an attractive appearance, maximum protection, and with **the best perforation coefficient in the market, for improved sound quality**. The Polyurea® finish offers durable protection for the birch-ply cabinet, and electronic circuits and controls are smartly protected against moisture. A wide range of accessories is provided for whatever your application is.



THE PERFECT BALANCE

NÍTID series is the culmination of an intensive program of research, development and optimization, to achieve the greatest possible power and performance from the most compact sized cabinet. Every aspect of its form factor has resulted from examination and consideration of optimum acoustic response, ergonomics, construction and appearance.



AMAZING PERFORMANCE

The integrated **'plug & play'** active power and control system includes DSP presets for rapid setup and amazing sound, and the comprehensive control interface includes instantly recallable presets for setting up the NÍTID in just a few seconds. The accurate match between transducers, DSP and amplifiers provide a fully optimized system for the most demanding applications.

