



**CARDIOID PRESETS**  
AVAILABLE with external  
Amate Audio amplifier & DSP



**MULTIPLE PRESETS**  
AVAILABLE with external  
Amate Audio amplifier & DSP



**HIGH RESISTANCE  
POLYUREA PAINT®**



**BEST FOR  
REDUCED SPACES**



**HORN LOADED  
BAND PASS  
DESIGN**

The optimum solution for reduced spaces. Precise low-end in a small and compact format, designed to have the best size-to-performance ratio.

## KEY FEATURES

### TRANSDUCERS TECHNOLOGY

Passive subwoofer composed by one 3-inch voice coil, 12" loudspeaker loaded in a band-pass tuned enclosure with laminar ports.

### POWER & CONTROL

800 W continuous power in musical program.

Connectors are placed on an inclined plane to effectively protect them against rain or moisture.

Double Speakon NL4MPR® (input & link).

Recommended presets available for DSP206, DSP608 and TPD.

Cardioid presets available for DSP206 and DSP608

### DESIGN & ACCESSORIES

Ergonomic handle for an easy handling.

1.5mm speaker grille with black mesh, exclusively designed with an optimum perforation gradient and attractive appearance.

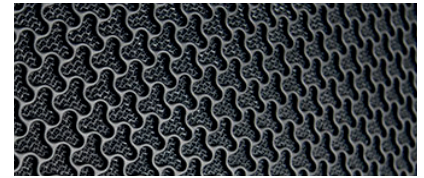
Multilayer birch plywood cabinet with Polyurea® coating, offering maximum reliability and strength for touring as well as for high demanding applications.

M20 plate socket provided at the top side for full-range enclosure coupling.

## TECHNICAL FEATURES

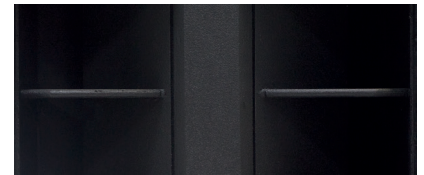
Power (musical program)	800 W
Power (r.m.s)	400 W
Nominal Impedance	8 Ω
SPL(1W/1m)	96 dB
Maximum SPL (continuous/1m)	125 dB
Maximum SPL (peak/1m)	128 dB
Crossover frequency (recommended)	80 Hz / 90 Hz / 100 Hz / 110 Hz / 120 Hz
Frequency Response (-10dB)	38 Hz – 140 Hz (with external DSP)
Components	12" woofer (3" voice coil)
Directivity (H x V)	Omnidirectional
Directivity factor (Q)	1
Directivity Index (DI)	0 dB
Weight	24.9 kg
Finish	Multilayer birch plywood with high resistant black Polyurea® coating
Dimensions (HxWxD)	384 x 520 x 552 mm
Grille	1.5 mm steel with black acoustic mesh
Rigging	No
Connectors	1x Speakon NL4MPR input / 1x Speakon NL4MPR link

## DISCOVER NÍTiD



## UNIQUE DESIGN

Distinguishing details include the speaker grille, exclusively designed for an attractive appearance, maximum protection, and with **the best perforation coefficient in the market, for improved sound quality.** The Polyurea® finish offers durable protection for the birch-ply cabinet. A wide range of accessories is provided for whatever your application is.

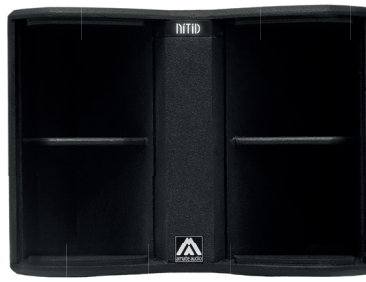


## THE PERFECT BALANCE

**NÍTiD** series is the culmination of an intensive program of research, development and optimization, to achieve the greatest possible power and performance from the most compact sized cabinet. Every aspect of its form factor has resulted from examination and consideration of optimum acoustic response, ergonomics, construction and appearance.



SIDE VIEW



FRONT VIEW WITHOUT GRILLES



REAR VIEW

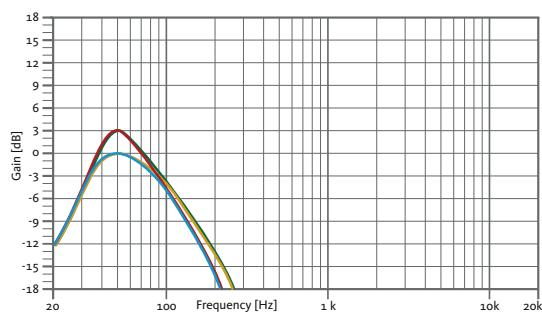


BOTTOM VIEW



TOP VIEW

## RECOMMENDED PRESETS with external Amate Audio DSP

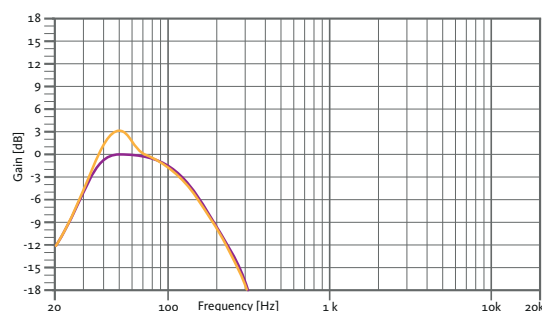
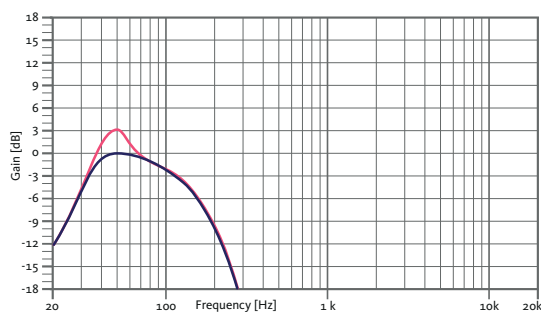


LPF90  
LPF 90 Hz

LPF90+3  
LPF 90 Hz + 3dB boost @ 50Hz

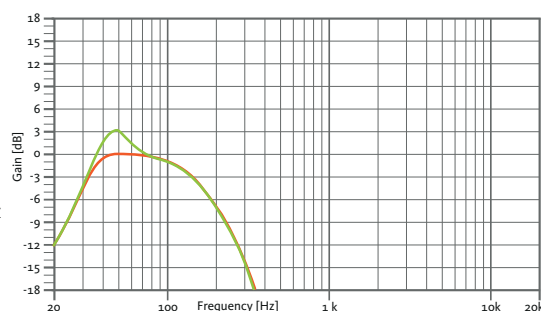
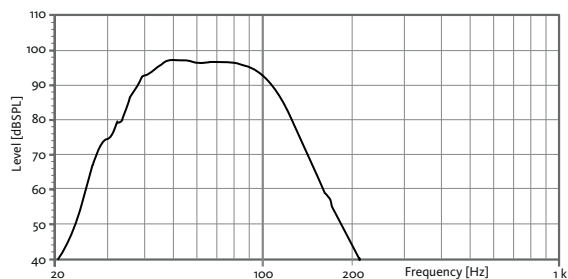
LPF100  
LPF 100 Hz

LPF100+3  
LPF 100 Hz + 3dB boost @ 50Hz

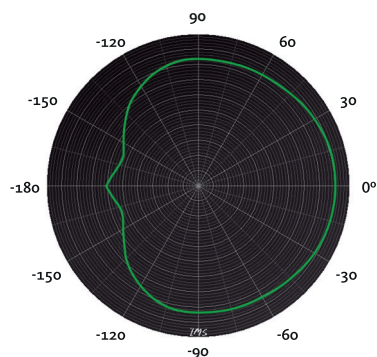


LPF120  
LPF 120 Hz

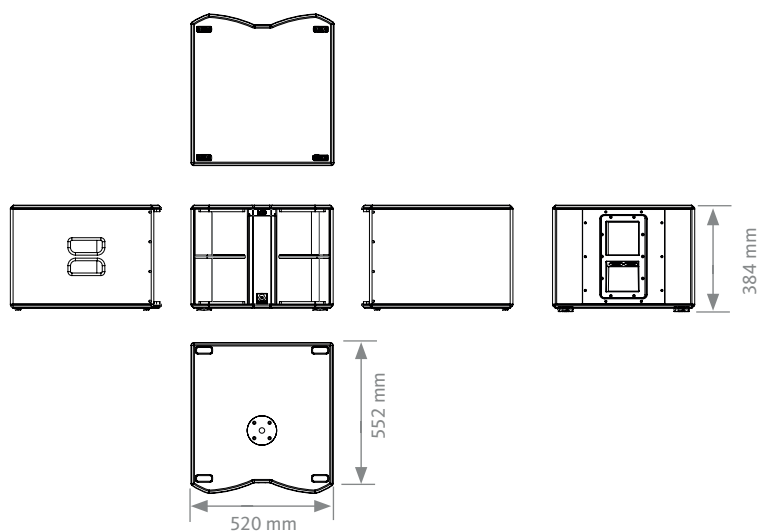
LPF120+3  
LPF 120 Hz + 3dB boost @ 50Hz

FREQUENCY RESPONSE 1W/1m (LPF90+3 PRESET)  
with external Amate Audio DSP & HD3200 amplifierEASY CARDIOID CONFIGURATION  
THROUGH AVAILABLE PRESETS

63 Hz



## CAD DRAWING SCHEME



# N12WP

800 W  
1x 12" PASSIVE  
SUBWOOFER

# NíTiD



## ACCESSORIES

### FLIGHT CASE

#### FC-N12W

for two units of N12WP



### DISTANCE ROD M20

#### SP-CRTL

ø: 35 mm  
Length: 55 cm ~ 90 cm  
Thread: M20



## THE BEST COMBINATION

The best experience of NÍTiD passive systems is reached with Amate Audio's HD Series amplifiers, TPD amplifier and DSP206/608 digital signal processors. Factory presets are available to setup the system in a short time.



TPD Series



HD Series



DSP Series

## RECOMMENDED CONFIGURATION

