

JK26

2x 6" TWO-WAY
SPEAKER SYSTEM

JOKER



**It's amazing! Says everyone who listens to the JK26.
Ultra-compact design but yet a high performance
and unmatched sound quality.**

Todo el que escucha JK26 coincide: ¡Sorprendente!
Diseño ultra compacto que contrasta con un elevado rendimiento
y una calidad sonora sin fisuras.

JK26

2x 6" TWO-WAY SPEAKER SYSTEM



Carbon fiber cone



Light neodymium components

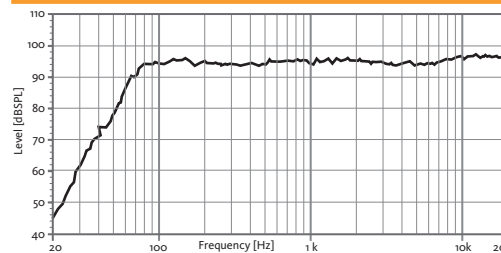


High resistant Polyurea® Paint

TECHNICAL FEATURES JK26 PASSIVE

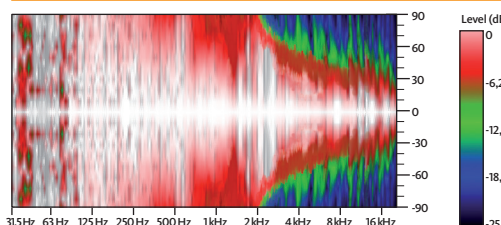
Power (musical program)	400 W
Nominal Impedance	16 Ω – 8 Ω under request
SPL (1 m)	95 dB (1 W), 121 dB continuous 124 dB peak
Frequency response (-10 dB)	70 Hz – 20 kHz
Components	LF-MF HF
	2x 6" Neodymium woofers with carbon fiber cone (1.5" voice coil) 1" Neodymium Titanium diaphragm tweeter
Directivity (HxV)	90° x 90°
Weight	8.7 kg
Finish	Multilayer plywood Optimized front steel grille with foam High resistant bi-component black Polyurea coating

FREQUENCY RESPONSE 1W/1m (FLAT PRESET)

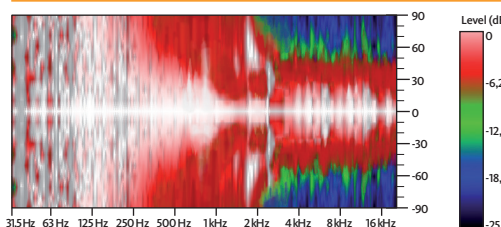


* With external Master Audio DSP

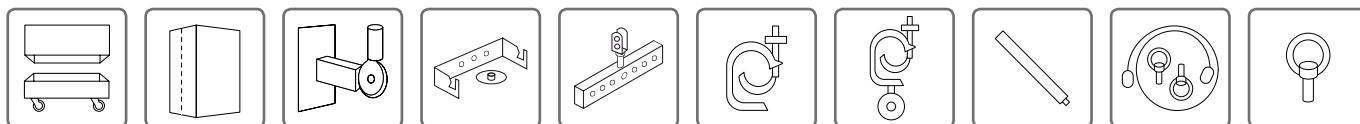
HORIZONTAL COVERAGE, 0°



VERTICAL COVERAGE, 0°



ACCESSORIES



FC-JK26

NC-JK26

SP-35

SP-26

HR-26

GT-50

GT-50HR

SP/CR

SC-15

ACR-M8