

## 8" Touch Panel VK320

The ATEN VK320 is an 8" Touch Panel featuring capacitive multi-touch IPS-LCD screen with a narrow bezel. Natively installed with the ATEN Control System app, the touch panel is compatible with ATEN Control Boxes and Control Pads.

The VK320 supports Power over Ethernet (PoE), which allows power and data to be carried over a single Ethernet cable to the touch panel, making it perfect for applications that require solid and wired connections.

The Touch Panel VK320 features an in-wall design and a sophisticated touch panel that comes complete with an 86-type junction box, ensuring a versatile and efficient solution. The VK320 is also perfectly suitable for the smaller and compact scenarios such as digital podiums or lecterns. It is worth noting that the VK320's mounting plate is compatible with standard decorator-style, 1-gang junction boxes of the US, EU, and MK type; it is also compatible with VK101 and VK102 Tabletop Kits to support desk mounting and wall mounting to meet versatile installation needs. The uniform equilateral design is suitable for flexible placement in either horizontal or vertical orientation.



VK320



VK320 + VK101 (Tabletop Kit)  
VK101 is sold separately.



VK320 + VK102 (Tabletop Kit)  
VK102 is sold separately.

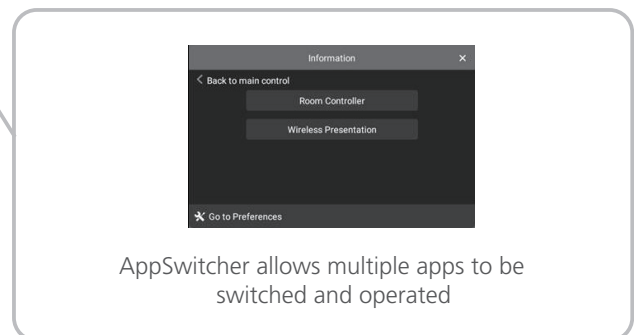
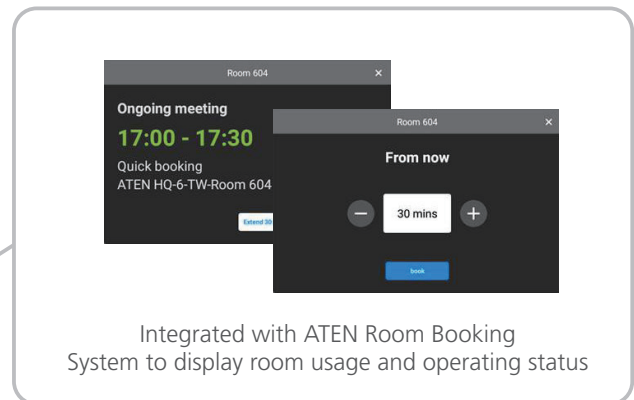


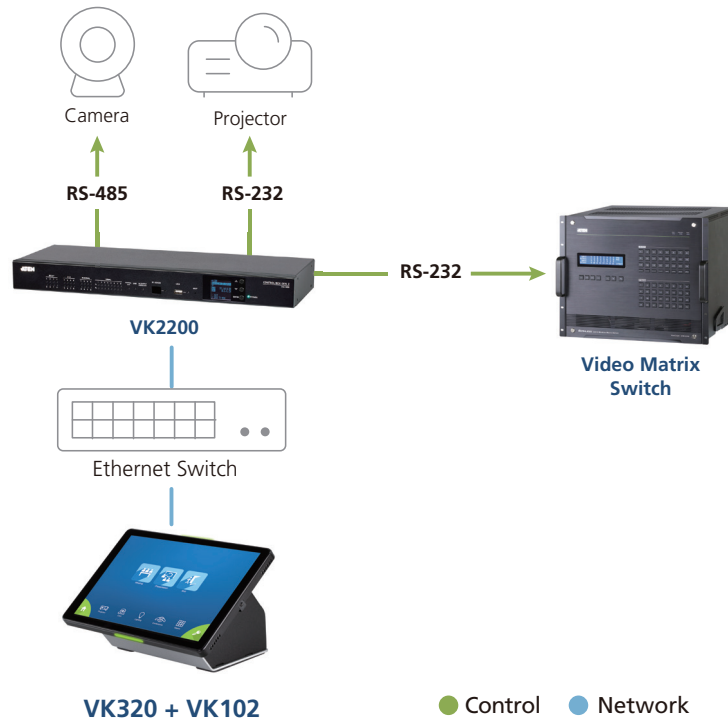
VK320 + 86-type Junction box

## Features

- 8" touch panel with narrow bezel modern design
- Natively installed with ATEN Control System app and designed for the integrated use with ATEN Control System
- Supports AppSwitcher to allow multiple apps to be switched and operated
- Integrated with ATEN Unizon and ATEN Room Booking system to display room usage and operating status
- Allows administrators for central control of multiple rooms via profiles
- Restricts user access to profiles via password authentication
- Synchronization of system control among multiple ATEN Touch Panels, mobile devices, and tablet computers
- Demo mode enables demonstration without connecting a controller while familiarizing users with the solution's most important functions
- Screen Saver helps energy saving and prolongs the device lifetime
- Allows for Display Real-time Streaming Protocol (RTSP), ONVIF, and ATEN VE89 series video preview\*
- Supports Power over Ethernet (PoE), which allows it to receive power and data over a single Ethernet cable
- Side power LED – features the indicator in the dark place
- In-wall design – perfectly fits in building decoration
- Compatible with VK101 and VK102 Tabletop Kits for desk mounting and wall mounting

\***Note:** The function is applicable to VK2200 / VK1200.





## Specifications

	VK320
<b>Processor</b>	Quad-core
<b>Memory</b>	
SDRAM	2 GB
Flash	32 GB
<b>Panel Spec</b>	
Display Type	IPS-LCD
Size	8"
Touch Screen	Capacitive
Resolution	1280 x 800
Aspect Ratio	16:10
Color Depth	8 bit
Contrast Ratio	800:1
Backlight	LCD
Viewing Angle	± 85° (H), ± 85° (V)
Luminance	300 cd/m <sup>2</sup>
<b>Interfaces</b>	
Ethernet	1 x RJ-45 Female, 10 / 100 BaseT
<b>USB</b>	1 x USB Type-C
<b>Power Inputs</b>	
Power over Ethernet (PoE)	802.3 at PoE+
<b>Power Consumption</b>	DC 12V: 12W PoE: 14.1W
<b>Environmental</b>	
Operating Temperature	0 – 40 °C
Storage Temperature	-10 – 55 °C
Humidity	10 – 75% RH, Non-Condensing
<b>Physical Properties</b>	
Housing	Plastic
Weight	0.33 kg
Dimensions (L x W x H)	20.01 x 12.46 x 3.77 cm

### ATEN International Co., Ltd.

3F., No.125, Sec. 2, Datung Rd., Sijhih District., New Taipei City 221, Taiwan  
 Phone: 886-2-8692-6789 Fax: 886-2-8692-6767  
 www.aten.com E-mail: marketing@aten.com

Product information is subject to change without prior notice.

Released: 02/2025 V3.0

© Copyright 2025 ATEN® International Co. Ltd.  
 ATEN and the ATEN logo are registered trademarks of ATEN International Co., Ltd.  
 All rights reserved. All other trademarks are the property of their respective owners.

