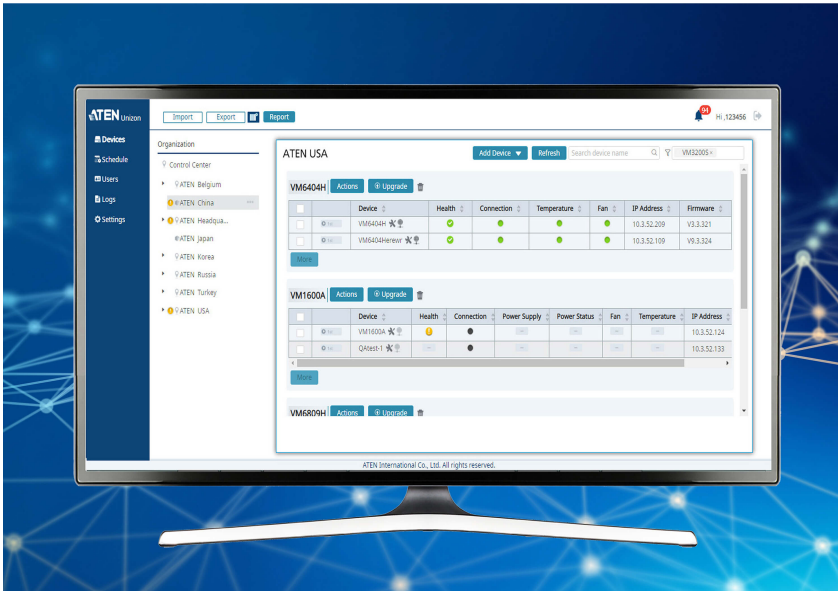


## ATEN Unizon

Global AV Management Platform



### Your Power to Monitor, Control, Manage

ATEN Unizon™ is a server-based software for AV and IT professionals to centrally monitor, control, and manage ATEN Modular Matrix and Video Matrix solutions anytime, anywhere.

[GET FREE TRIAL!](#)



## Device Condition Monitoring

Real-time monitoring and tracking of device condition for troubleshooting and maintenance.

### Condition Detection

Automatically detects device power status, temperature, fan, and connection status, helping you perform maintenance to avoid potential device failures.

**R302**

Add Device ▼
Refresh

**VM1600A**
Actions
Upgrade
🗑️

		Device	Health	Connection	Power Supply	Power Status	Fan	Temperature
<input type="checkbox"/>	<input type="text" value="1st"/>	R409 ✖️🌀	⚠️	●	●	●	●	●
<input type="checkbox"/>	<input type="text" value="1st"/>	QAtest-1 ✖️🌀	—	●	—	—	—	—

More

**VM6404H**
Actions
Upgrade
🗑️

		Device	Health	Connection	Temperature	Fan	IP Address
<input type="checkbox"/>	<input type="text" value="1st"/>	33333_Louis VM6404H ✖️🌀	⚠️	●	—	—	10.3.52.109
<input type="checkbox"/>	<input type="text" value="1st"/>	VM6404H ✖️🌀	⚠️	●	—	—	10.3.52.209

More

Hi, 123456
94

Add Device
Refresh

Upgrade
🗑️

Device	Health	Connection	Temperature	Fan
M6404H	✔️	●	●	●
M6404Herewr	✔️	●	●	●

Upgrade
🗑️

Device	Health	Connection	Power Supply	Power Status	Fan
M1600A	⚠️	●	-	-	-
QAtest-1	-	●	-	-	-

Logs / Notifications
Remove All

- i

**Device removed**

The user admin was una...  
Control Center > AIEN China  
2019-04-15 18:05:31

🗑️  
➕
- i

**Device removed**

The user admin was una...  
Control Center > AIEN China  
2019-04-15 17:57:35

🗑️  
➕
- i

**Location added**

The user admin has adde...  
2019-04-15 17:54:25

🗑️  
➕
- i

**Location added**

The user admin has adde...  
2019-04-15 17:54:15

🗑️  
➕
- i

**Location added**

The user admin has adde...

🗑️  
➕

### Alerts and Notifications

Instantly get notified of device abnormalities to perform troubleshooting actions and reduce down-time.

### System Log

Device usage and abnormal events are recorded so you can analyze past usability and plan future optimization.

Time	Category	Severity	Event	Description
2019-04-14 08:31:57	Device trap	Information	Device name synchronized	The name for de fully.
2019-04-14 08:31:57	Device trap	Information	Device name synchronized	The name for de fully.
2019-04-14 08:31:57	Device trap	Information	Device name synchronized	The name for de fully.
2019-04-14 00:00:00	System Task	Warning	Unable to start schedule	The server was t
2019-04-14 00:00:00	System Task	Warning	Unable to start schedule	The server was t
2019-04-14 00:00:00	System Task	Warning	Unable to start schedule	The server was t
2019-04-13 08:32:10	Device trap	Information	Device name synchronized	The name for de d successfully.
2019-04-13 08:32:10	Device trap	Information	Device name synchronized	The name for de d successfully.
2019-04-13 08:32:08	Device trap	Information	Device name synchronized	The name for de fully.
2019-04-13 08:32:08	Device trap	Information	Device name synchronized	The name for de fully.

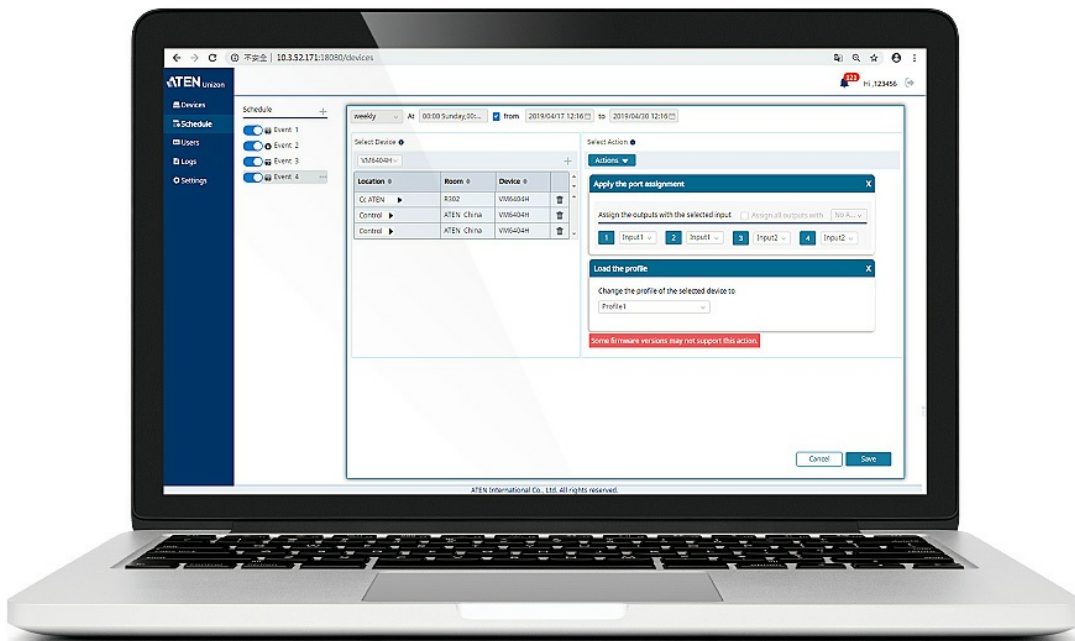


## Global Control and Scheduling

Perform and schedule routine tasks and firmware upgrades across multiple devices simultaneously.

### Device Group Control

Execute actions instantly across multiple devices simultaneously, such as switching ports, profiles, resolutions, and video off.



### Event Scheduling

Schedule routine tasks for devices to carry out, such as setting different video contents to display at specific times of the day or week.



Schedule +

---

- Event 1
- Event 2
- Event 3
- Event 4 ...

weekly At 00:00 Sunday,00:...  from

Select Device ?

VM6404H

Location	Room	Device
Cc ATEN	R302	VM6404
Control	ATEN China	VM6404
Control	ATEN China	VM6404

VM6404H

Actions

+ Upgrade

🗑️

		Device
<input type="checkbox"/>	<span style="border: 1px solid #ccc; border-radius: 5px; padding: 2px 5px;">1st</span>	VM6404H
<input type="checkbox"/>	<span style="border: 1px solid #ccc; border-radius: 5px; padding: 2px 5px;">1st</span>	VM6404Herewr

More

### Firmware Upgrade

Remotely update the firmware of multiple devices simultaneously directly through the platform, saving you time and maximizing productivity.

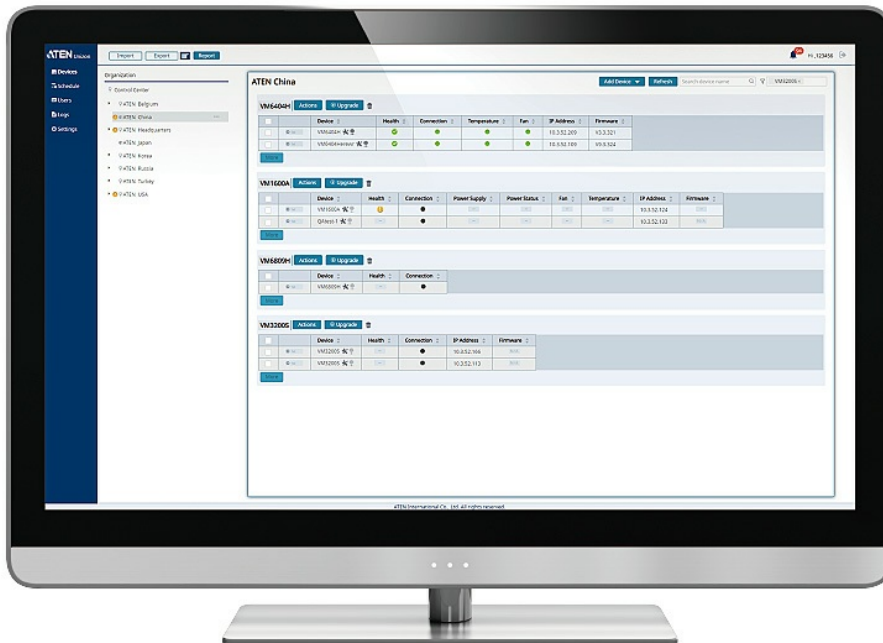


## Access and Location Management

Set user access levels and manage devices by room, floor, building, or even by city.

### Device Location Tree

Easily navigate the location of devices on the 5-level location tree by drilling down by room, floor, building, or even city.



### Floor View

View devices across different buildings / floors grouped by device.



Import Export Report

Organization

- Control Center
  - ATEN Belgium
  - ATEN China
  - ATEN Headqua...
  - ATEN Japan
  - ATEN Korea

**R302** Add Device

VM1600A Actions Upgrade

<input type="checkbox"/>		Device	Health	Connection	Power
<input type="checkbox"/>	1st	R409			
<input type="checkbox"/>	1st	QAtest-1	-		

[More](#)

**Room View**

View information for individual devices located in a single room.

**User Roles and Access Levels**

Define User Roles and respective permission access levels on a room-by-room basis so that information can be accessed by relevant people only.

**ATEN** Unizon

- Devices
- Schedule
- Users**
- Logs
- Settings

94 H, 123456

Users

- Administrator
- Mike
- Gary
- Leo
- Mike

**Basic** Access

Username  
  
Valid characters include uppercase and lowercase letters, numbers, and special symbols (~@,~@!).

Password  
  
Valid characters include uppercase and lowercase letters, numbers, space, and special symbols (~@,~@!).

Confirm Password  
  
Valid characters include uppercase and lowercase letters, numbers, space, and special symbols (~@,~@!).

**User Type**

Administrator  Standard User

[Discard](#) [Apply](#)

ATEN International Co., Ltd. All rights reserved.

## Features

ATEN Unizon™ is a server-based software for AV and IT professionals to centrally monitor, control, and manage ATEN Modular Matrix and Video Matrix solutions anytime, anywhere. It is easily deployed and integrates control of your entire installation zone, no matter how big or widely distributed. Management and configuration are simplified with the intuitive user interface that allows AV/IT administrators to perform common AV tasks, schedule tasks, and execute tasks by batch using a grouping function. When an abnormal event arises, the software will alert the administrators with a notification and log the event for tracking. This centralized management software benefits system integrators with intuitive and effective features that enable fast deployment as well as remote monitoring, control, and management, especially for large-scale applications with numerous ATEN Ethernet-based AV solutions across different locations.

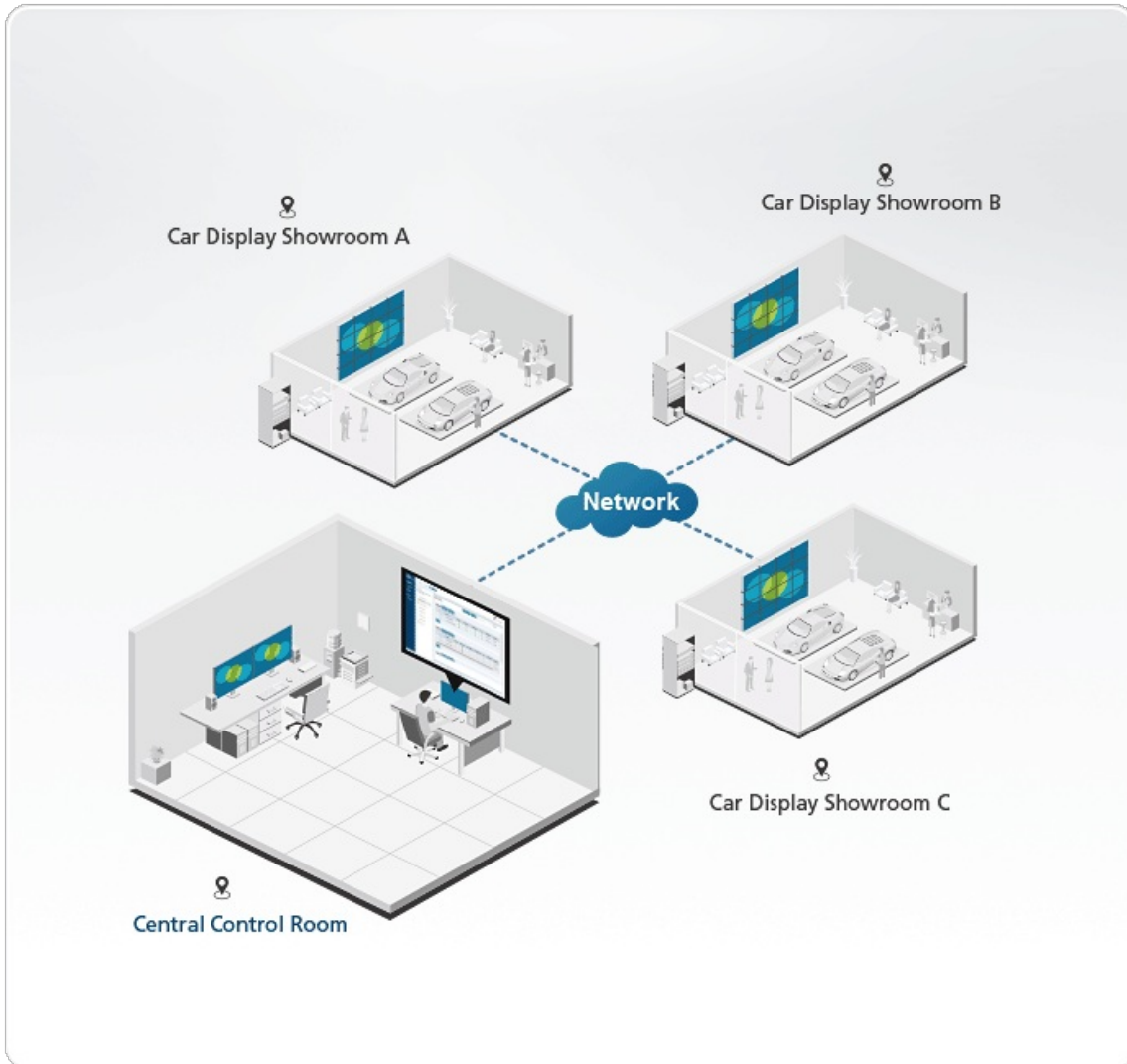
- Centralized management, monitoring, and control for ATEN Ethernet-based AV solutions
- Automatic detection of device conditions – shows device connection status, hardware conditions (e.g. fan and temperature), and firmware versions for remote maintenance and troubleshooting
- 5-level device location tree – easily navigate the device by drilling down by room, floor, building, or even city
- Device grouped control – allows for batch control and firmware upgrade
- Task scheduling – schedules routine tasks for devices to carry out on a regular basis
- Notifications and system logs for abnormal events
- Manageable permission access level
- Supports mainstream web browsers

## Specification

Processor	3.2GHz
OS Support	Windows 7(32/64 bit) and above
Storage Capacity	10GB available hard disk space
System Memory	8GB
Web Browser	Internet Explorer v11 and above Mozilla Firefox v54.0 and above Google Chrome v56.0 and above
Note	For some of rack mount products, please note that the standard physical dimensions of WxDxH are expressed using a LxWxH format.



Diagram



**ATEN International Co., Ltd.**

3F., No.125, Sec. 2, Datong Rd., Sijhih District., New Taipei City 221, Taiwan  
Phone: 886-2-8692-6789 Fax: 886-2-8692-6767  
www.aten.com E-mail: marketing@aten.com



© Copyright 2015 ATEN® International Co., Ltd.  
ATEN and the ATEN logo are trademarks of ATEN International Co., Ltd.  
All rights reserved. All other trademarks are the property of their respective owners.